

*Families to Match
the Mountains*



*Malta Ward Centennial
1910-2010*

ACKNOWLEDGMENTS

This book is a work of love and admiration for those who came before us, for those who were the giants of our youth, for those who continue to show us the way. Sometimes when looking at the streets of Malta we think that time has stood still, that nothing much has changed. And if we only look at the physical makeup of the town, that is true.¹ No one from 1910 would get lost if he/she walked down Main Street in Malta. The changes have been more subtle—in the expansion of the farm land, in the growth of population outside the city limits, in the standard of living brought about by modern technology and conveniences. What has not changed is the faith, hard work, perseverance, and dogged determination to succeed of those who live here today. It is often said that if a man is a successful farmer in Malta, he could grow crops anywhere.

It is those very traits which have made this publication possible. It began with the collection of the histories written throughout the years, the pictures shared, the boxes of memorabilia, the research of the Centennial Committee. At times it has been overwhelming. How could we possibly put in everything we learned and collected? Thus some hard decisions were made. Wonderful stories and pictures were left out. We hope the essence is enough.

We have acknowledged individuals, families, and historical publications in the "Introduction," but we must here list those whose technical skills were vital to the completion of this huge project. Janet Yates has been invaluable in her technological expertise and her patience with a

¹ The Village of Malta was incorporated in 1959. It has recently added sidewalks and street lamps!

novice author. She has spent untold hours in consultation and in fixing the problems. Mike Telford's photography is spectacular—he has made Malta look beautiful! Randy Spaeth's creativity and technology produced exceptional posters for the advertising of the events and the availability of the book. Kinko's Printing in Logan, Utah has been very helpful and willing to do what we asked. We do apologize for any errors made. We have tried to be sure of the facts, the names and dates; however, we sometimes had to go with the best guess.

Most of all we are grateful to those pioneers whose stories and accomplishments fill these pages. We look forward to another 100 years.

INTRODUCTION

Families to Match the Mountains

Families to match the mountains;
strong, noble and grand.
Rising so high, touching the sky,
together, forever they'll stand!
Climbing the peaks and valleys,
they'll march hand in hand.
Family thrills match the everlasting hills
and the mountains that cover the land.
Families that grow together—
are blessed from above.
Striving to be happy and free
by living a lifetime of love.
Look to the highest summit—
climb each grassy knoll.
Reach out to seek each tall and lofty peak
and match the mountains . . .
and lift up the soul,
lift up the soul.

Words and music by Janie Thompson

Families to match our mountains! They came and many stayed. We pay tribute to them—to their courage and perseverance, to their strength through years of hardship and trials, to their faith and love.

When our committee met to plan the centennial celebration of the Malta Ward, we had only a vague idea of what we wanted to do. Our main goal became to honor those who came before us and to share these remembrances with all of our friends and neighbors in the valley—members of the Malta wards and those of other faiths because we have faced the triumphs and tragedies of life together. We are family.

Those of us who have lived here for 60 or 70+ years remember those pioneers—most of them gone now. But their legacy lives on. To preserve that legacy and to share it with our children and grandchildren and the new families in the valley, the committee decided to compile a book. Most of what is written here is not really new; we have borrowed and gleaned from the works of many others. Ethel Cottle, Naomi Paskett, Fontella Tracy, Sarah Wight, Bob Thompson, Clarence Barrett, Scotty Gamble,

and Ada Parke collected pictures and wrote histories. The families of Elmo Elison, Doctor Sater, Jack Pierce and Fred Kossman shared life histories. Professional publications such as *Images of America: Cassia County* by Valerie K. Bowen and the Cassia County Historical Society; *Cassia County, Idaho: The Foundation Years* by Kathleen Hedberg; *Pause for Reflection* collected by the Daughters of Utah Pioneers Cassia County Company were invaluable as sources. Please read the originals as not every community and event that you can find in those volumes is included here. Pictures and anecdotes from numerous families and our personal perspective were added along the way. The thing that makes our version unique is that we have brought the vast album of photos together in one place. Some you can find in the previous publications; the new ones are from the private collections of the families here in the valley. All of them are priceless!

For many of us growing up here in Malta in the 40s, 50s and 60s, our lives were filled with music. The Thompsons, Udys, Bronsons, Wights, Andersons, and many others brought us hours of pleasure. When we decided to do an historical performance, it was natural to include those who have sung and danced their way across the pages of our lives. Thank you, Janie Thompson, 89 years young, for putting the show together and for bringing the Thompsons and Udys here once more. Your music will ring in our hearts forever.

This book has not included the wonderful stories of every family in the valley. We urge you to insert your family story into its pages. Make sure your posterity knows about the heroes and heroines who came to the Raft River Valley and raised those strong, noble and grand families. May we stand together forever.

With our love and gratitude,

The Malta Ward Centennial Committee:

Janis Hawkins Warr, Co-chair
Mary Alice Chistofferson Telford, Co-chair
D. Jay Harper
Albert Jay Cottle
Cedric Taylor
Margie Gilbert Neff, Malta 1 Historian
Clara Wight Beyler, Malta 2 Historian





L to R: Ollie Anderson, Frank Johns, George Chatburn, Harrison Powers, Ralph Lounsbury, Jim Hitt, Floyd Taylor, Joe Stewart, Ted King, Fred Kossman, Tommie Taylor, Sam Cottrel, Ed Kossman, Bill Pierce--

The cattle ranchers of Malta ran out of hay during the winter of 1917 and drove their cattle down to Raft River at Heglur Lane to feed.

We wonder who had the presence of mind to take this picture!



--Buck Peterson and his brother on one horse, Allen Batch, Frank Shodde, Dick Anderson, Bert Cottle, John Hitt, Ether Parke, and three unidentified cowboys.

(Photo courtesy of Ada Parke)

The Early Years

When we try to imagine what the early explorers and settlers saw when they entered our Raft River Valley, we see it as it looks now—a seemingly empty, wind-swept valley with sagebrush dotting the cedar tree-outlined benches as the elevation rises from the valley floor. The mountains—Black Pine, Clear Creek, Sublett and Heglär, Jim Sage, Mt. Independence—stand guard. We see the lush farm ground sustained by the pivots in their never-ending circular paths in ever-widening sweeps; we see the prosperous homesteads and the oiled roads that criss-cross the valley allowing transport of crops, students to school and residents to Burley in less than an hour. It was not always so. Those first trappers and frontiersmen encountered a valley with native grass that grew to the bellies of their horses and a meandering Raft River that flooded the bottom lands over a mile wide and more as Clear Creek and Cassia Creek joined forces with it in their rush to reach the Snake River thirty miles away.

Before the cattlemen and farmers came, trappers and Indians used the valley for fur trapping, hunting and fishing. Peter Skene Ogden, John Works, and Milton Sublett trapped for the Hudson Bay Fur Company. The Works party entered the valley on May 4, 1831 and reached the Raft River, finding “it high and muddy. Traveling up the course of the stream they encountered herds of buffalo. . . . The Indian women who accompanied the trappers dressed and dried the meat” (Cottle 1). Large herds of deer and antelope grazed the grassy hills and fish were plentiful in the rivers and creeks (Hedberg 53). As a testament to their residence in the valley, Indian arrowheads and other artifacts were plentiful before the settlers’ plows turned them under. The once-abundant wildlife

diminished with the coming of cattle and sheep and the competition for the grazing ground.

Emigrant trains bound for Oregon and California crossed Cassia County. The traffic increased with the gold rush of 1849, but the Hudspeth Cut-off² shortened the long trip. The Raft River got its name when the pioneers found it necessary to build rafts to ferry the supplies and wagons across the wide stream.

Charles S. (Nibs) Gamble and J.Q. Shirley brought a herd of Texas-longhorn cattle from Abilene, Kansas in the spring of 1868. Mr. Gamble, the hired man and later long-time resident of Malta, reported that they spent the summer and fall in the Raft River Valley and then wintered in Fort Hall. The next spring they camped in a cove near The City of Rocks. On April 1, 1871, Mr. Shirley settled on what is now known as the Keough Ranch. Andrew Sweetser and John Quincy Shirley became partners for a few years. Sweetser soon settled a few miles north. Eighteen-year-old James M. (Jim) Pierce brought 2000 head of Sparks cattle and landed them at the Sweetser and Shirley camps on the Raft River. “Pierce later joined with Sweetser to form one of the larger local cattle companies in the area. At one time they owned between twelve thousand and fifteen thousand head of cattle and all the land from the Keough ranch to the mouth of Raft River, a strip 1 ½ to 2 miles wide and about thirty miles long” (Hedberg 52). James M. Pierce’s son, Arthur Dooley Pierce, and his son, John Arthur (Jack) Pierce, became leading stockmen in the area

² The Hudspeth or Meyers Cut-off left the Oregon Trail just west of Soda Springs and proceeded West across the mountains through the Sublett canyon and out into the Raft River Valley crossing the Raft River near the present day town of Malta where it joined the California Trail leading up Cassia Creek and over to the City of Rocks. The deep ruts of this trail can still be seen today where it crossed what is now the Pierce ranch located 4 miles southeast of Malta (“Pioneer Idaho Cattleman: James M. Pierce.” *Idaho Cattleman*. March 1972: 10).

until Jack retired and sold the ranch in 2005 to Nolan Branch.



James M. Pierce

The Pierce family participated in community and state organizations. James M. Pierce, an active Free Mason and a Democrat, was elected to the Idaho State Senate in 1897. While he was in Boise for the legislature, the original home burned. Only the organ was saved. The charred logs can still be seen on a storehouse on the Pierce Ranch. A new brick home was immediately built with bricks made and baked on the ranch. The new house was exactly like the old one except that the outside walls were much wider in hopes that the width would slow another fire should one occur. A white layer of stucco was added years later during some remodeling to give a uniform appearance (Ottley 12).



Original Pierce home in 1892

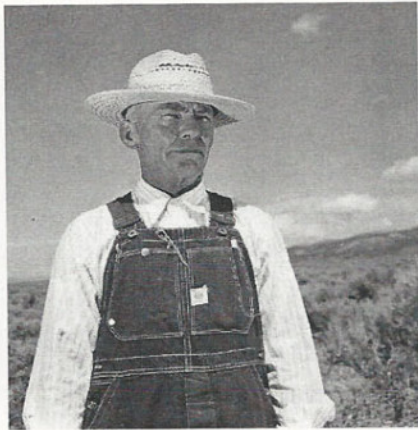


Courtesy photos
Jack Pierce stands with his daughter Ann in front of the storehouse. This was one of the original buildings on the ranch.

Arthur Pierce studied law at the University of Illinois, and then taught math and coached at Twin Falls High School. When his father died in 1908, he came home to rescue the ranch which was in a receivership due to an unscrupulous business transaction on the part of Andrew Sweetser. He married Bulah Shuping, a pretty, red-haired school teacher from Hillsboro, Illinois in 1914. Bulah had arrived by stage in 1912 to teach school in Malta. To pay off the mortgage on the ranch, Arthur and Bulah raised turkeys. A.D. Pierce was the president of a growers' association. By 1930, two accredited turkey raisers in the Raft River Valley were Mrs. Arthur Pierce and Mrs. Bert Cottle. Pierces raised their turkeys on five-acre fenced fields.



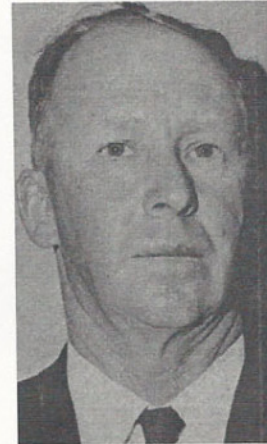
Arthur Dooley and Bulah S. Pierce 1915



Arthur Pierce

Jack Pierce later recalled how hard times were during those days. He told a reporter in 2005 that he still had “a difficult time eating turkey” (Ottley 12). Ann Pierce Wight relates that they were never allowed to have turkey for Thanksgiving—they had roast beef! Jack graduated from the University of Idaho in 1938 and returned to the ranch where he loved to raise Hereford cattle. He married Mabel Snodgrass in 1953. Jack “served as [president of the Idaho Cattle Association and director of the Bureau of Land Management advisory board. He was a member of the Magic Valley Livestock Hall of Fame, and was named by the Idaho Cattle

Association as the outstanding beef producer of the year in 1977” (Ottley 12).



Jack Pierce 1977

Beef production and marketing has come a long way from the time the Keough Brothers trailed cattle from Texas to Wyoming and Montana. While on the trail in 1871 they passed through the Raft River Valley and later acquired 1500 acres in 1881. The property and additional land and cattle were incorporated under the name of Raft River Land and Cattle Company. It was later re-incorporated into the Raft River Land and Livestock Company in 1907 (Cottle 1).



The 4-H livestock judging team traveled to Ogden, Utah in 1931. They won the top judging award. From L-R: Art Pierce, Jack Hitt, Jack Pierce, Mr. Warren (the county agent), and Glen Parke.



Headquarters of the Keough Ranch, late 1800s. This log cabin was originally built during the 1860s at Moulton and was later moved to the Keough Ranch. (Hedberg 51) Photo Courtesy of R & J's Camera Shop, photo by Ralph Holmes.

In 1872, Thompson Parke and his wife, Julia Sessions Parke³, lived in a dugout for two years up on Cassia Creek; then in 1874, Charles C. and Margaret Parke built a large log house on what is now the Cottle Ranch ("Scott Gamble 1954 Tour" 7). William Henry Parke had arrived in 1871. He raised sheep and cattle. He is credited as having raised the first commercial crop of potatoes in Cassia County (*A Time for Reflection* 273).



Parke log cabin on Cottle ranch

³ Julia Sessions Parke was the second white child born in Utah—only one month and one day after Brigham Young led his band of pioneer immigrants into the Salt Lake Valley. On her 90th birthday she recalled her early childhood, the frequent friendly visits of Chief Pocatello and the Shoshone Indians and the famed hospitality of the Andrew Sweetser ranch on the Raft River (*Salt Lake Tribune* news article in possession of Ada Parke).

Ether and Cecelia Hutchison Parke settled on what is now the Glen and Ada Parke ranch. They lived in a log cabin and then built the frame house which is the current home of Ada Parke.



Ether and Cecilia Parke



Cecilia Parke with daughter, Eunice, on the sheep. The log cabin, their first home, is on the right.

There were many other early cattlemen. Among them, Dell and Bill Rice (1871), Sam and Jim Coe (1872), Andrew Lonsberry, George Scott, John Bouhoare, Joe Parke, Ben Hitt, James B. Hitt, and a Mr. Stauffer (Cottle 2). The Beechers, Wards, and Hutchisons also joined the ranks who continued to trail their cattle to Corrine or Kelton, Utah to send them to market. The Taylor family settled on a ranch in Elba in 1882; they had purchased it from James M. Pierce "for a very few dollars" (qtd. in

Hedberg 52). They later bought land in Malta to grow alfalfa and winter sheep. The Coe Ranch became Taylor & Sons.

The earliest settlers were ranchers, but soon the farmers arrived: the Hall brothers--John in 1890;



John Hall



Frank Hall



Leonard Parley Hall

Frank in 1892 and Leonard Parley in 1901--and I.J. Neddo in 1896 and his later partner, Thomas R. Smith in 1900. They farmed along Cassia Creek and the Raft River, raising alfalfa, grain and sheep.⁴

⁴ There is a Warranty Deed from Mary Caldwell, a widow, dated 3 October 1902 to I.J. Neddo and T.R. Smith for 220.3 acres of land with 85 inches of water from Cassia Creek. Purchase price = \$3800. Two years later, 10 October 1904, Thomas and Emma Smith transferred their interest in the land to I.J. Neddo for \$2000. The following spring, 8 April 1905, the Smiths bought the Frank Hall property in Malta which consisted of 120 acres of farm ground due east of town and about 27 acres on the west side of the street. 120 inches of water from Cassia Creek went with the sale. Later another Warranty Deed from the



Thomas R. & Emma O. Smith, circa 1920. He was the first Sunday School superintendent in 1908. Their son, John Obray Smith, became bishop in 1936.



Home of Thomas R. & Emma O. Smith as seen from Rose Smith Galliher's yard; Rose was born in this home. It was later sold to the Shaw family. The house burned down about 1980.

All of "these early settlers were prominent because they each did something to help develop the country and to establish farms, homes, schools, churches, etc." (*A Pause for Relection* 264).

Smiths to Charles Shaw and wife is dated 21 July 1924 for the 120 acre farm for \$7000 (J. P. [Jack] Smith in Smith Family History).



I.J. and Alice O. Neddo home, built in 1906



Isaac James Neddo

At first there was little conflict among the farmers, ranchers and sheepmen; however, the competition for grazing and agricultural land became a source of contention. The sheep needed less water, grazed the grass much shorter, and would eat the sagebrush and other plants that the cattle would not use. "The ranchers accused the sheep of spoiling the range for cattle, stating that cattle would not graze in an area after sheep had been there. In 1875 the cattlemen convinced the Idaho legislature to pass the 'two-mile-limit law' prohibiting sheep from grazing within two miles of a cattleman's claim" (Hedberg 53).



James Handy, an early Malta settler, herding sheep

A severe drought hit the entire West in the winter of 1889-90. The spring rains were not sufficient to sustain the native grasses. The following winter brought blizzards and extremely cold temperatures causing the loss of thousands of head of cattle and sheep. Many ranchers went out of business. The rangeland as they had known it was gone—forever.

. . . According to all early Cassia County settlers and emigrants, sagebrush did not grow in the mountains in Cassia County before 1890. In explaining this phenomenon that also occurred in other places in the West, historian James Young noted that for nearly two decades the native plants had been 'severely and selectively reduced by two decades of unlimited livestock grazing. . . Perennial grasses are largely bunch grass and depend on seed for reestablishment. Two decades of excessive grazing had virtually eliminated seed production in many areas.' . . . The sagebrush [and juniper] had come to stay⁵ (Hedberg 54).

Eventually, the sheepmen moved further east in search of greener pastures, coming back to the

⁵ Ecologists have traditionally defined plant communities based on climax vegetation. The climax vegetation of an area is the vegetation that will out compete other species and will eventually dominate a site for a long time, several hundred years or more, barring any new disturbance. In Cassia County sagebrush and juniper are two climax species (Hedberg 54).

valley to winter their flocks. The Hawkins family of Samaria, Idaho was one of those who settled in Bridge to winter their sheep and raise forage in the summer months. Soon the cattlemen and sheepmen were competing for the forest rangeland which led to a grazing permit system; while not popular initially, it led to a revival of good grazing land and a return of the depleted wildlife. The farmers and the ranchers decided there was room for all and peace was restored on the range (Hedberg 55).

In 1934 a horse roundup was held in the valley in response to the Taylor Grazing Act. Anyone grazing livestock on public land had to verify and establish reason to be given a permit to run a certain number of livestock for a certain amount of time. It took a week to gather all the horses from Strevell to the Snake River and off the mountains around. Horses were corralled at John Powers' on the north and at Ray Olson's corrals on the south. There were approximately 600 horses gathered. Owners collected their own; the others were driven to the railroad, weighed and sold for two cents a pound. About a dozen coyotes were also caught. Harry Lambert bought them, sold them and bought a pickup load of pop and beer and brought it to the corrals for the cowboys (Elmo Elison History)!

Businesses

The first store in Malta was built in 1886 by W. A. Bull. It was located just west of the cemetery; the complex included a home and a dance hall. Just across the road, a saloon was owned and operated by Joe Parke, a half-brother to Ether Parke. Later Ben Hitt operated that business (Cottle 2).

Mr. Bull could not write so he kept his records by drawing pictures to remind him of what people owed him. Bob Hutchison said that one day as he was settling his account he noticed a charge for cheese. He told Bull he had not bought cheese but

there did not seem to be a charge for a grindstone he had purchased. It seems Mr. Bull had forgotten to draw a hole in the middle of the circle by Bob's name (Cottle 2)

Mr. Bull had built another store in Sublett in 1882; he tried to move it to Malta in 1883. On the way he had to cross the Raft River. There was not a bridge, and as he was fording the river, the wagon box turned over spilling everything out. One of the men helping him saw a keg of whiskey floating down the river so he rode his horse out into the stream, roped the keg and returned it. The group had a party that night with the whiskey, but they let the rest of the belongings float on down the river. The lane just north of General Mills is named Bull's Lane in honor of Mr. W. A. Bull (Tracy. "Raft River/Crossroads").

Leonard M. Condit built a store in the late 1890s which burned down in 1955 not long after this picture was taken. It stood where the Malta Fuel Depot is now. He also built the two story house just south of the store. It burned down in the 1970s (Gamble).



Condit Store built late 1890s; burned in 1955

In 1915, Frank C. Nash, a licensed druggist, built and operated a general store and drug store across the street from the Condit store. In 1919, he sold the business to Orson S. Sanders who operated there for 39 years. It was later sold to Maylon and Marge Whiting who sold it to Lloyd and Charlotte

Schorzman and is now owned by Gary and Valarie Bake. It is the oldest standing business in Malta.



The Malta Service building in the following picture was originally built by Abercrombie. In 1901, Gambles moved it from a field on the east side of the highway to the corner where Jim Bennett's Chevron station stands. It was later sold to Tommy Taylor and then to Matt Udy. Dick and Elaine Anderson then owned it. The building was moved to Idaho in 1954 and a new store and service station replaced it (Gamble).



Malta Service



Brent Udy in front of the old Ed Officer building where the Earl Udy family lived for a time; many businesses, including the Raft River Rural Electric Co-op, and the school used this building.



HER Food
The Valley Café was located on the corner where the new post office now stands. \$2 in 1958 could buy a hamburger for 25 cents, French fries for 25 cents, a milk shake for 25 cents, and 6 tunes on the juke box which left \$1 for gas—about 4 gallons!

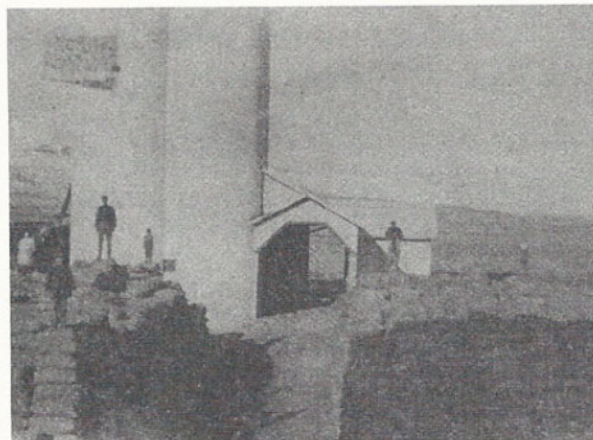
Malta was one of several thriving communities in the valley. Originally the railroad came to Idaho. Work on the railroad began on May 15,

1911. "As news of the coming railroad spread, farmers, ranchers and land speculators spread out across the valley. 'Whistle Stops' sprang up along the right-of-way in anticipation of prosperity to come. The failure to complete the railroad meant disaster to any who had built stores, hotels and dance halls to serve the expected influx of people. Strevell, in particular, got a good start toward becoming a major city. At one time there was a post office, two stores, a hotel, theater, dance hall, school, garage and two or three service stations" (Maughan, Ralph.)

Della and Ed (William Edward) Williams were some who came to Idahome in 1917 where they went into the mercantile business and sold hay and grain to cattle and sheep men. Della recalled that when the train came to Idahome there was a Y where the turn was made back to Burley. Children and older folks alike looked forward to Sunday, which was the day the train came. The extreme cold of Idaho bothered her the most; she thought Idaho was "the end of the world" when she first arrived but came to love it and her neighbors. Della remembered what they charged for some items when they ran the store: a dozen eggs cost 15 cents; a can of peas or corn 10-15 cents; thread was 5 cents; pop 5 cents; all kinds of penny candy; bread was 5 cents for a small loaf and 10 cents for a large loaf; material sold for 15 to 25 cents a yard; the first pair of shoes she bought when she was grown cost her \$3.50" During the 1930s the Williams family sold the store and bought 600 acres of farm land three miles north and one mile east of Malta. (Tracy. "Della Williams . . .").



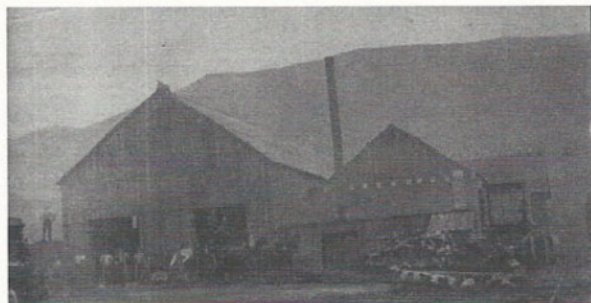
Della Williams 87 years old



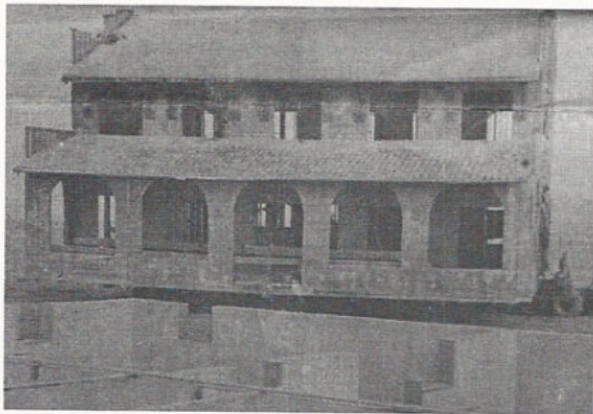
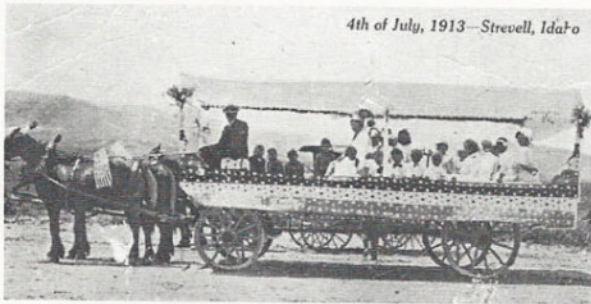
Grain came to the Idahome elevator from Malta, Heglar, Idahome and Sublett, and was stored in the Williams elevator and stacked in sacks all around (110,000 sacks).



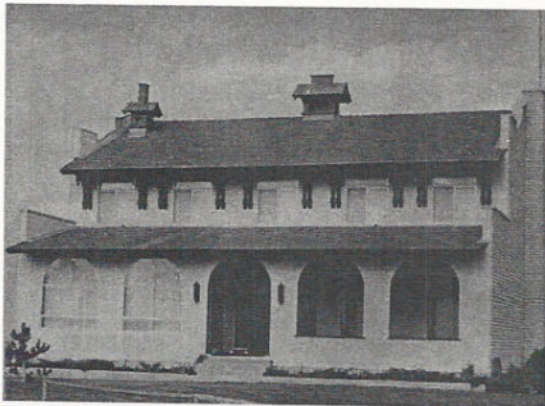
The train was a welcome sight, freeing snowbound Idahome from winter's grip



Train Turnaround at Idahome



The old hotel at Strevell ready to be set on new foundation at Bridge on the L & G Ranch headquarters



After the restoration



Glen Parke and Bert Cottle posing in front of Clement's Pool Hall in Malta

Schools

The first school house was built in 1883 of logs with a dirt roof, held together with willows and cat tails. The logs were brought from Heglar Canyon and stood on the south side of Bull Lane just a little east of Malta. Sarah Condit was the first teacher. There were about 25 children in the first class; they brought their own books, if they had them. They sat on board benches, about six to a bench. The school was surrounded by sage brush so at noon the children would grub the sagebrush until they had a play space.

The red brick school was built in 1902.⁶

⁶ Elmo Elison's history records it as 1910.



Red brick school

A later addition was used as a music room and lunch room. In 1912, a gray rock building with eight class rooms that housed both elementary and high school students was built to accommodate a growing community. This building was supported by tuition from the area families and teachers. It burned down December 16, 1930. All was lost except for a few books taken home to study. "The following summer a group of men [I. J. Neddo, Jesse Shill, John A. Elison, and George W. Neddo] contracted the building of a new school. It was beautiful to us who had been left with only the old red school house and an old hardware building to attend classes in" (Paskett).



Moved into the new school January 2, 1932



Malta Elementary students, circa 1922
L - R back row: Jack Horne, Scott Shill, Jake Smith, Glen Parke, ?, Fay Kossman, Jay Wake, and ?
Front row: ?, Wanda Taylor, ?, Della Sater, Melba Shill



High School Band 1938-9 (There were 20 in the band, but only 10 are shown)
1. Ruth Udy 2. Leland Durfee 3. Kenneth Hastings 4. Janie Thompson
5. Junior Eames 6. June Gardiner 7. Fred Shill 8. Kent Horne 9. Blaine Mickel 10. Roberta Haycock



Class of 1939
L-R: June Gardiner, Eddie Scott, Janie Thompson, Ruth Udy, Fred Shill, Kent Horne, Norma Sanders, Rachel Elison



Ruth Udy Dare, Jane (Janie) Thompson, Norma Sanders Van Leeuwen, Rachel Elison Ham 89 years young in 2010⁷

The class of 1955 moved into the new high school in that spring. It continues to serve area students with the addition of an auditorium and an expanded gymnasium. The newest facility is the Raft River Elementary built on the same site as the 1932 building in 1989.

⁷ Ruth Udy Dare, Jane (Janie) Thompson, Norma Sanders Van Leeuwen, and Rachel Elison Ham were born in Malta, Idaho within a few days and weeks from each other in 1921. They grew up together, did everything together, and graduated together from Raft River High School in 1939. Norma and Rachel tied for valedictorian, and Ruth and Jane tied for salutatorian of their graduating class. From then on their paths separated with Ruth and Rachel going to the southern branch of the University of Idaho in Pocatello, and Jane and Norma enrolling at Brigham Young University in Provo, Utah.

They managed to keep in touch in spite of colleges, wars, marriages, children, careers, missions, and all kinds of church callings. Their lives, no matter what else they did, always centered around the Church of Jesus Christ of Latter Day Saints and their families.

Being born and raised in Malta, Idaho has been a uniting bond and blessing for these four life-long friends. They will never forget their roots and the important values and testimonies they developed in Malta, which prepared them for the great events that happened to each of them as the years passed by. Congratulations to the faithful saints and friends who contributed so much along the way during these busy 100 years of significant service and love of the Lord in this part of His vineyard. Malta and the Raft River Valley have never been better! Eternal blessings are abounding! "O, it is wonderful!"

By Janie Thompson



Raft River High School 2010



Raft River Elementary School 2010



Ephraim and Myrtle Miller

He served as teacher and principal of Raft River High School from 1936-1971 (with the exception of three years in Albion) and as president of the Raft River Stake from 1944-1959. He is credited with helping 663 students to achieve their high school diplomas. The library at RRHS is named in his honor.

Seminary



Seminary building built in 1938 by Bill Barrett and sons Laurence and Clarence Barrett.



Raft River Seminary 2010

The Malta Seminary celebrated its 50th anniversary in 1981. Jay Cottle explained that there had been 10 seminary teachers up to that time. They were: Chloe Sanders, 1930-38; Ida Belnap, 1938-47; Barbara Udy, 1949-57; Jay Cottle, 1957-60; Lee Darrington, 1960-61; Jay cottle, 1961-68; Brother Lessonbee, who taught six months in 1968; Jack Wight, 1968-71; Dave Howell, 1971-74; Steven Blake, 1974-78; and Hal Baird, 1978 -1981.



Past Malta LDS Seminary teachers who were honored on May 15, 1981 in celebration of the 50th anniversary of the program: L-R Front row: Chloe Sanders (who was then 95) and Barbara Udy. Back row: Steven Blake, Hal Baird, Jay Cottle, and Jack Wight.

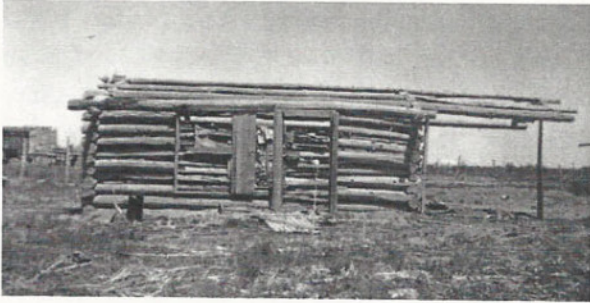
Because of the efforts of Chloe Sanders, the seminary program was started in 1930. She taught classes in her home located at the rear of Sander's Merc. In 1932 she moved her classes to the north end of the old school lunch building (the red brick building built in 1902). In 1938 a one-room wood frame building was built on the south end of the seminary lot. William Barrett, with the assistance of his sons--Laurence and Clarence, built it. Stake President, Edwin H. Paskett, was instrumental in getting the present seminary built in 1963-4. Harry Willmore was the building contractor. Classes were held in the new building before it was dedicated. In 1970, A. Theodore Tuttle of the Seventy, and former Assistant Director of Seminaries dedicated the new building.

The following teachers have taught seminary since the 50th anniversary: Mike Paddagon, 1981-82; Randy Wilkinson, 1982-87; Dale Sturm, 1987-91; Norm Gividen, 1991-93; David Jesson, 1993-95; Mike Jacobs, 1995-2000; Boyd Baggets, 2000-01; Dan Johns, 2001-06; Daren Lotz, 2006-10.

The seminary building was remodeled in 1996-7 and rededicated by C. Scott Grow of the Seventy in 1997.

Post Offices

Ada Condit, the sister to the first teacher, became the first postmistress in 1883. The post office was a small two-room, dirt-roofed log building.



Remains of the first post office

At that time, the mail was brought in twice a week from Bridge on horseback by Bob McCormick. Ada was asked to name the community. She chose "Malta" as it looked like a green oasis in a wide expanse of desert—like the island of Malta in the Mediterranean Sea. She served as postmistress for 12 years. She married John Farley in 1908.



Ada and John Farley in 1908

Leonard M. Condit, brother to Ada and Sarah, was appointed postmaster in 1886, and then Jessie L.

Hubbard in 1906 with Ethel Hall as assistant postmaster. "In the late fall of 1914, the postoffice and store where it was located burned down. . . . Ethel L. Hall was appointed postmistress on July 6, 1915. She was married to Albert J. Cottle on August 16, 1916 and was re-appointed as Ethel L. Cottle" (Cottle 7-8).

In 1920, George W. Richins became postmaster. J. Henry Thompson was appointed on July 1, 1921 and served 40 years until his retirement in 1961. The Thompsons built a new brick home in 1933 just north of the old building; the new home also served as post office with Lora Thompson as clerk.



Bob Thompson and Caroline Thompson with friend, Grant Beyler on the tricycle in front of the Thompson home/post office

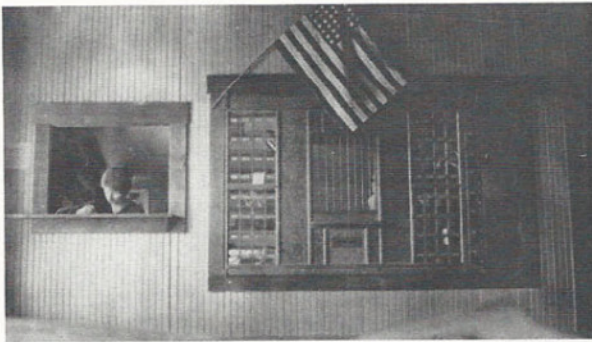


J. Henry & Laura Thompson, postmaster and clerk for 40 years. He also served as bishop of the Malta Ward from 1947-1961.⁸ Perhaps their greatest contribution is their talented family.

⁸ See Appendix A for a memoir of Bishop Thompson.



Leonard Condit and Ethel Hall at the mercantile



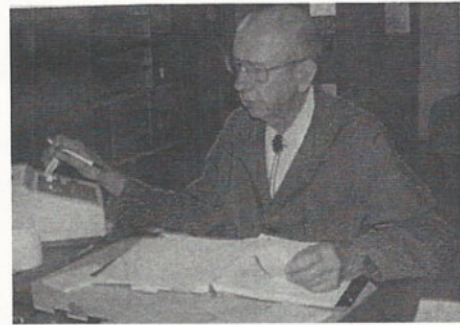
Ethel Hall, postmistress, in the Condit post office

Ruth Williams served as acting postmistress until Dale Oscar Pierce became acting officer and then postmaster on August 10, 1962, a position he held until August 2, 1999. Under a lease agreement with the US Post Office, Dale Pierce built a new building which was dedicated on February 22, 1963. The dedicatory address was given by Congressman Ralph Harding, who also presented the flag to postmaster Pierce.⁹

Dale Pierce has spent his life in public service. After WWII, Dale returned to Malta to work on the ranch which his grandfather, James M. Pierce, started in 1871. His ranching caused him to become an advocate for the cattleman. He was a charter

⁹ A complete listing of postmasters and officers in charge can be found in Appendix B.

member of the Point Springs Grazing Association (renamed the Lee A. Sharp Experimental Area) and the Southern Idaho Livestock Association (he was inducted into that Hall of Fame), served on various boards and councils including the National Public Lands Council, the Idaho Cattle Association, the Burley District Grazing Advisory Board, the Burley District of the BLM Advisory Council, the Malta Lions Club, the Raft River Fire District, and is an active Freemason in Albion Lodge. In 1986, Governor John Evans honored him for his contributions to Idaho (Steber, Rick & Kristi.). He continues serving our community even though he and his wife, Jean, now live in Burley. Every year they deliver flowers/baskets to the widows in Malta. Dale also volunteers at Cassia Memorial Hospital.



Dale Pierce retiring after 37 years at the Malta Post Office



Dale Pierce with new post office

Churches

The first church organization was a Sunday school, begun in 1903. Thomas R. Smith was superintendant, with Charlotte Hall as secretary and Robert Wake, Sr. as chorister. It was held in a two-room log building on the Taylor Ranch north of Malta. It lasted for the summer months but soon died out.



First log post office and Sunday School

Thomas Smith, Robert Hutchison, Leonard P. Hall, and I.J. Neddo brought logs from Heglar to build the first church in 1908, a branch of the Elba Ward.¹⁰

¹⁰ On November 9, 1912 Thomas R. Smith and Emma Smith sold a lot to the first bishopric of the Malta Ward. The lot measured 130' North, 200' West, 130' South and 200' East, containing 0.6 of an acre. The price was \$10.00. A similar lot directly across the street to the south sold for \$50.00 the same day. On March 14, 1913, about four months later, the T. R. Smiths sold a strip of land, 30' by 200' on the north side of the church lot to the Relief Society presidency (consisting of Martha Hutchison, Lottie Hall, and Luella Smith) for \$10.00. It was a common practice in the early days of the church for the Relief Society to build their own little building to use as a meeting and working place for the members. The building was never erected (John P. [Jack] Smith remarks in Smith Family History).



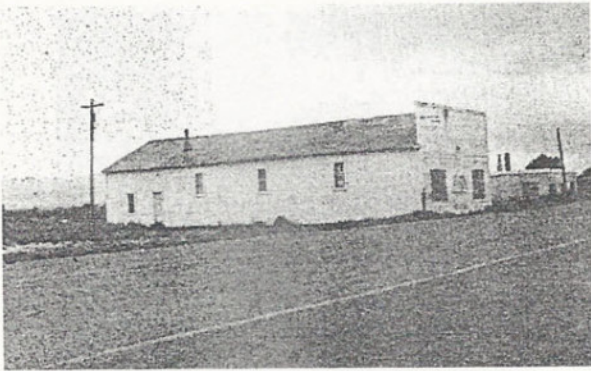
This first church house was abandoned around 1921 after the stake headquarters moved to Malta. The building was then used as a factory for Kraft Cheese for many years.

On November 13, 1910, the Malta Ward was organized with Thomas E. Taylor, Jr. as Bishop, Jessie L. Hubbard as First Counselor, Robert Hutchison as Second Counselor and Alfred Hubbard as Ward Clerk. The first Relief Society of the Malta Ward was also organized with Martha Hutchison as President; Charlotte Hall, First Counselor; and Lena Horne, Second Counselor. There were approximately 246 members at that time.¹¹



Thomas Taylor, Jr. 1910-1915—First Bishop

¹¹ See Appendix C for list and pictures of bishops and bishoprics for Malta 1 and 2 Wards. Appendix D lists the members in 1910.



This is the second church built about 1921. It was later used as roller skating rink, Wednesday night showhouse, and the site of many turkey shoots. It stood just south of the mercantile store.



Malta Ward Relief Society Presidents honored at anniversary social, March 17, 1958

L-R: Alice O. Neddo (1922-1944); Helen O. Kelsey (1944-1948); Sarah D. Wight (1948-1953); Lois Z. Elison (1953-1958); Leone Bell (1958-?) The Malta Ward Relief Society was organized in 1910 with Martha Hutchison (deceased) as president (1910-1922). Lona C. Hepworth was the outgoing Raft River Stake Relief Society President; Thera E. Harper was the new president (neither is pictured here).

Alice Neddo, wife of I.J. Neddo who served as bishop and later a counselor in the stake presidency, was Relief Society president from 1922 to 1944. Sister Neddo drove her team and buggy or rode the horse several miles to the church; upon arriving, she gathered chips and built the fire to heat the building and do the cleaning before meetings. "It was her duty to make the clothing for and clothe the dead, and to keep all-night watch over the body" (Estella Hall qtd. in *South Idaho Press*).



Third church, built in 1939-1940.

This building was dedicated August 8, 1943 with President J. Rueben Clark of the LDS First Presidency and Presiding Bishop Wirthlin presiding. A coal furnace heated the water for the baptismal font in the basement. During the summer months, many were baptized at the Lester Hawkins warm-water well in Bridge. Jeanette Barlow Bennett, Jay Cottle, LaMont Beyler, and Charell Hutchison were the first baptisms in the new church. Ironically, Deward Hall helped to build the church and later helped to tear it down.



Trailbuilders on Scottie Gamble 1954 Tour swimming at Lester Hawkins warm well—also served as baptismal font in summer months.



Taken June 29, 1944

L-R Back row: Florence Ward, Jenny Lee, ?, Mary Udy, ? Hope Gardiner,
 Pearl Zollinger, Lora Thompson
 Front row: Mary Elison, Roxie Horne, Abbie Ottley, Nina Barrett



Relief Society circa 1930s

L-R Back row: Ethel Cottle, Ivy Jardine, Melba Mortenson with baby
 Karen, Marion Taylor, Hope John, Ardith Rigby with baby Cheryl ?,
 Middle row: Ona Gunnell, Sara Harper, Margie Bronson
 Front row: Thera Harper, Ida Horne, Charlotte Hutchison



A ward dinner served by the bishop and his counselors and clerk: R to L:
 Bishop J. Henry Thompson, Lora Thompson, Harvey J. Wight (1st C),
 Sarah D. Wight, Charles H. Warr (2nd C), Chloe B. Warr, Tell Taylor (clerk)
 and Marian N. Taylor



Malta First & Second Ward 2010

The new building was finished in 1976 and was dedicated on February 8, 1976. D. Jay Harper was the bishop at that time. The dedicatory prayer was given by President Joseph A. Gillette of the Cassia East Stake. The funeral for Jesse Pierce, one of our early settlers, was held in the new building even before the benches were installed.

1910 was a very good year

In addition to the organization of the new Malta Ward, the Malta Cemetery District was organized on July 30. Thomas Taylor, Jr.; Ether Parke; and Arthur H. Condit purchased the land from George S.

Hadfield for \$66. People had been buried there for years but now it was official.



Clarence Barrett and his daughter Kaye Barrett, tending the cemetery grounds. The Barrett cemetery tradition began with Barrett's father-in-law, David Hutchison, who was instrumental in removing sagebrush, leveling graves and planting grass.¹²

The Sublett Reservoir was first built in 1910, allowing the farmers and ranchers there to have access to the precious lifeblood of this area. The first boarding house was opened by Mrs. Sarah Gamble. The old Carnahan houses were part of that establishment. Most important, Doc Sater arrived to heal the sick and deliver babies.

Louise Sater Belliston reminisced: "We were terribly poor because people sometimes paid their bills with beans or potatoes. If they did pay my dad, they would ask him how much for the office call, and always his answer was, 'Oh, about a buck!' Sometimes . . . if he knew their money was scarce, he'd just tell them that he'd catch them next time.

¹² Clarence's favorite cemetery story began more than a century ago: "One moonlit night, people sauntered into a smoke-filled saloon at the base of a hill. At one table, muffled voices discussed the day as cigar smoke curled above poker players' Stetsons. The room emptied suddenly as the peaceful night was shattered by the report of a gun and the death of a misfortunate cowboy. 'The man was shot and killed in the saloon, dragged up the hill and buried,' said Barrett. The unknown victim's grave is still marked by a solitary rock, which stands there today. . . . 'I think of it whenever I mow around [the rock]'" (Tuttle, Heidi).

Of course, Mom suffered because she hardly ever had anything new and sacrificed many times to keep us clothed and fed which was very difficult . . . He could quote Shakespeare verbatim, Edgar Allen Poe, and almost any other you might mention. He did math problems in his head, while we kids might struggle away for hours trying to solve one.

"One time he was called into Malta to care for a sick shepherd who had Rocky Mt. spotted fever. With other patients to attend, he asked my brother Ed and his friend, Max Lloyd, to watch him throughout one night. Dad's parting words were, 'Give him plenty of water to drink!' Oh, yes, there was ample water given, but when the good Dr. arrived in the morning, he was staring at a corpse. The man had evidently died before midnight. Ed and his friend said he was like a board each time water was administered, but they gave it anyway!" (Belliston).

"Doc" Sater traveled all over the valley by horse and buggy, by Model T, and by sleigh when the snow was too deep. His family motto was: "Burn the midnight oil!" He gave everything he had to people through his professional knowledge and skills, leaving behind a legacy of interesting stories that have been handed down from generation to generation. As one woman said recently, "I thought Dr. Sater was God until I was twelve years old!" (Belliston). We are indebted to Dr. Sater and his family.



"Doc" Sater home in Malta, 1932-36



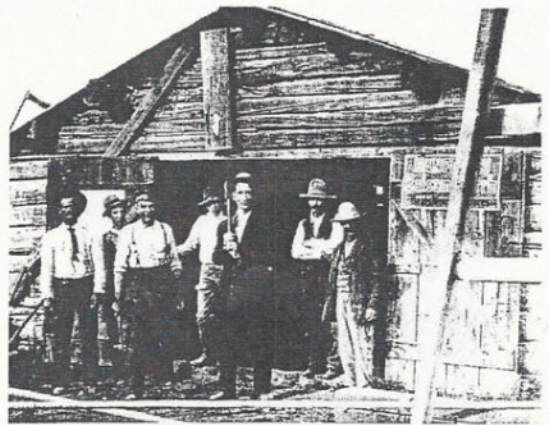
Doc Sater (34 yrs.), Jess Pierce, Macey Hultz, Jerry McBain in 1916

Not only did the good doctor arrive in 1910, but it was a very good year financially. The value of the 1910 dollar was equivalent to \$15.96 in 2003. In contrast, the 1951 dollar was equivalent to only \$5.96 in 2003. According to the 1910 census, 247 people lived in Malta, 258 in Sublett, and 66 in Bridge (that included 33 Basque shepherders in the Bridge area).¹³

Growth and Prosperity

Published in Malta and later in Idahome, the *Inland Empire* newspaper reported on December 13, 1912: "Malta now boasts of three stores, a pool hall, two blacksmith shops, a harness and shoe shop, a U.S. Landoffice, an amusement hall, two hotels, a church and a school building, besides a doctor, two dressmakers, and a barber" (Tracy. "Raft River/Crossroads"). The article neglected to mention a post office.

¹³Information from "Value of the Dollar" table in Hedberg 158 and "Census for Years 1900-1930" table in Hedberg 242.



Jerry McBain Blacksmith Shop

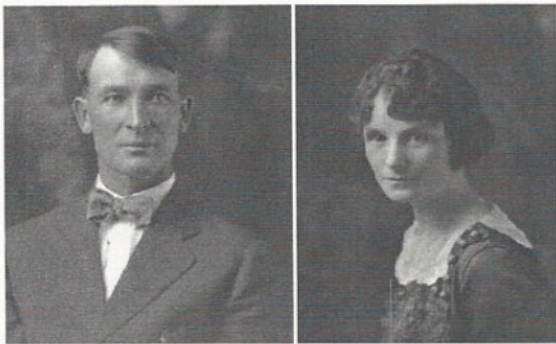
L to R: Mack Abercrombie, Wayne Osterhout, Jerry McBain, Lafe Carnahan, Perry Burdick, Nibs Gamble and one unidentified

Bert Cottle, a foreman for the Miller & Lux Cattle Company, a California outfit, came into the Raft River Valley in 1912. Miller & Lux ran their cattle in Clear Creek, on the Keogh Ranch and the Bar M Ranch north of Malta. Jay Cottle, Bert's son shares this story told by his father: "One day I and the cowboys were moving a herd of cattle from Clear Creek through Malta to the Bar M Ranch. A group of rough-neck boys wouldn't let the cattle pass through Malta. I rode up and visited with the boys and told them I would buy them all the candy they could eat if they would let the cattle pass. A red-headed, freckle-faced boy by the name of Brian Scott replied, 'Mister, you're just a big liar and a bag of wind. You wouldn't do anything like that!' Well . . . I dismounted from my horse and went into the post office/general store and asked the blue-eyed brunet to fill my hat with candy. She did. I paid for it and went outside the building, dumped the candy on the step and told the boys to fill their mouths and pockets with candy and disappear. They did as they were told and we moved the cattle on to the Bar M without any problem. . . . I ended up marrying that blue-eyed brunet postmistress in 1916! Her name was Ethel Hall." So, just like in the

old western movies, the cowboy got the pretty hometown girl.



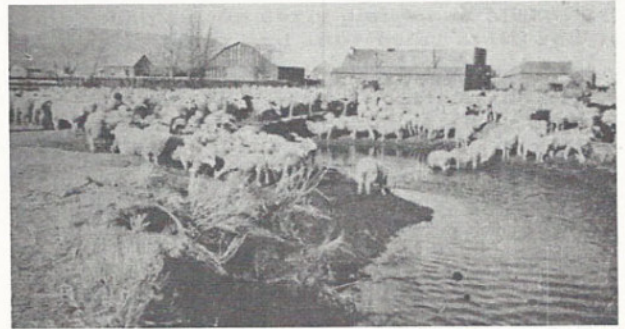
Albert J. (Bert) Cottle circa 1910



Albert J. (Bert) Cottle and Ethel Hall Cottle 1916

Bert and Ethel bought a ranch on Cassia Creek and raised cattle. They were each respected members of the community for many years. Ethel served as a teacher, a postmistress, a member of the American War Mothers, the Daughters of the Utah Pioneers, and a devout member of the LDS church, serving in many positions. Most of all, we are indebted to her as historian of our community and the Raft River

Valley. Their son, Albert Jay Cottle, still lives on the ranch with his wife, Julene.



Sheep watering on Cassia Creek 1916



Malta 1916



Malta 1916



Plowing the field; unknown farmer



Unknown driver, Jan.18, 1923 (Picture courtesy of Ada Parke)

Raft River Stake Organized

On April 27, 1915, the Raft River Stake was organized from the Cassia Stake at a meeting held in Almo, Idaho with John A. Elison sustained as president. Joseph Harper was sustained as first counselor, Henry Belnap as second counselor and George R. Richens as stake clerk. Elder Rudge Clawson and Joseph F. Smith, Jr., of the Council of the Twelve Apostles of the Church of Jesus Christ of Latter-Day Saints presided; presidents William T. Jack and John L. Smith, and Earl Whitley, stake clerk, of the Cassia Stake were also present (*A Pause for Reflection* 263).



John A. Elison

The formation of the new stake brought many changes to the valley. The stake headquarters was moved to Malta in 1919. John A. Elison moved his family from Almo and built a new home there. President Elison served as stake president for 29 years—from 1915 to 1944.¹⁴



John A. Elison home in Malta

Many families were uprooted and moved to Malta because of the new stake headquarters. While it may have been necessary for communication and unity, it was a hard cross to bear for some. Ray Udy, son of Mat and Mary L. Udy, said: "I can't think of a thing in my life that was more distressing than to be told we were going to move from the

¹⁴ A complete listing of stake presidencies may be found in Appendix E.

ranch in Connor to Malta. I had been going to school in a two-room school in Elba. We had to go a number of miles and the highest education offered there was the eighth grade. I am sure that my dear parents spent many a prayerful and restless night before coming to this decision. . . . I thought this was the only reason for making the move. It was not until my father's funeral that I found that it went much deeper than this. The Raft River Stake Presidency had asked my parents to move, along with several other families, to strengthen the Stake headquarters in Malta. Oh, how much faith this must have taken. Ray's brother, Orville, agreed: "I am sure it took great faith and courage for my folks to make that move. We all thought Malta was the end of the earth. At that time in history [1921] it was some kind of a wild little town. The town consisted of a store, pool hall, blacksmith shop, and a garage with one gas pump out in front. Sander's store and Deardorff's Hotel were painted [but only the fronts of the buildings according to Joe Barrett who painted them]; the rest of the buildings in town were badly in need of paint. Deardorff had the only lawn. Dad and Mother, to me, were just as great as the Saints who had given up their homes and moved west in the early days of the Church. I never heard either of them complain. It's what we believed in—what you did" (Udy, Mathias Cowley and Mary Lessey Udy).



The Udy Brothers: Orville, Rex, Ray, Earl

The Raft River Stake covered a large area geographically—from Yost, Utah to Albion, Idaho and from Clearcreek, Utah to Idahome, Idaho. Mary Udy was a stake primary president. She and her counselors visited seven different wards at least once a year. She didn't drive, preferring a horse and buggy, so the counselors drove the Model T. Mary related that the roads were dirt, not much better than cow trails in some places. The deep dust was stirred up and trailed as a cloud of smoke along behind them. Only canvas curtains and small isin-glass windows protected them from storms and the roiling dust (Udy, Mathias Cowley and Mary Lessey Udy).

Water! Too much or not enough?

Life for everyone in the valley in those days was hard. No electricity, running water, central heating, nor refrigerators. And Mother Nature continued to add to the trials. In spring run-offs the water from the foot hills roared its way to Cassia Creek which was usually full and over-flowing. The high water converged in the center of town—the intersection of the Thompson post office and Mat Udy's service station. In 1921 Mat jacked the house up on blocks to get it higher than the water. Drinking water was carried from Orson Sander's well (Udy, Mathias Cowley and Mary Lessey Udy). Over the years, the flood waters have continued to raise havoc on the businesses and residences. In 2010 a new sidewalk and drain system has been installed. It remains to be seen what will happen during a future flood.



Ruth Udy in 1921 Floodwaters; Mat Udy home directly behind; John O. Smith home is next



Kids love the 1921 flood!



Thompson home/post office under water directly across the street from Udy's service station



Cassia Creek flood waters at Hope Gardiner home

Water! The lifeblood of a windswept valley like this. Cassia Creek and the Raft River ebbed and flowed with the varying levels of snow pack. Soon the settlers had to look elsewhere. I. J. Neddo dug the first surface well, beginning in 1922 and finally finishing it about 1927! These wells were dug with horses and scrapers. The first deep well in the Raft River Valley was drilled on the Lester Hawkins ranch in Bridge in 1935. Harold Oman and Marlin Booth dug the next two wells, also in Bridge. These first wells were all pumped with gasoline motors (Cottle 5). Farmers in the Raft River Valley were the first in Cassia County to dig deep wells.

“County Agent W.W. Palmer reported in 1941 that ‘a great many’ pumps were being used there [in the Raft River Valley], ‘particularly during the middle of the summer when streams have retrieved their supply and when additional moisture is needed for finishing crops.’ The water table was ‘in the neighborhood of fifty feet,’ but because the area did not have electricity, the cost for pumping water with gasoline pumps was too high to provide water for crops for the entire season. During the 1930s the federal government furnished some free gasoline for pumping (Hedberg 202-203).

Electricity!

I. J. Neddo and John A. Elison were two of those who worked to bring electricity to Malta through the Rural Electrification Administration. Up to this time, most people used coal oil lamps for light. Some “people put in ‘wind chargers’ that would light bulbs, and some businesses in Malta put in Delco Light Systems. Mathew Udy’s store and Sanders Mercantile both had the Delco System that would store the juice in batteries. Then Sanders

purchased a large diesel engine that generated electricity for the whole town and he sold electricity for many years” (Elison, Elmo 9). Ethel Cottle noted that the valley began a transition from an era of oil lamps and pitcher pumps, gasoline-powered irrigation pumps, coal and/or wood stoves, ice boxes and many other wearisome practices to the electrical wonders of today (5). It was a truly memorable occasion for Elmo Elison: “I’ll never forget the night we turned on the lights in our home. We had a light bulb in the center of each room and a few plug-ins. I can still hear our old Atwater Kent Radio and those old programs—*Amos & Andy*, *Helen Trent*, *Laurel & Hardy*, and others. The old gas and coil oil lights were put away to gather dust, the old thunder-mug-slop jar, or what have you, was emptied for the last time, and the old Red Jacket pump handle dropped with a sad look—never to be raised again” (9).

M. Carlos Carnahan¹⁵ and his wife Leola reminisced: “It was a big day, the day we got electricity at Malta. It was Thanksgiving, and we had two deer barbecued. It was November of 1940, and the whole town celebrated with a barbecue. The first thing we did after we got electricity was to buy an electric washer. We had one or two lights but not much of anything else. . . . That first washer was heavenly, after scrubbing on a board.” Carlos added, “I can remember the first month, we used 13 kilowatts” (qtd. by Arvetta Savage).

Indeed, electricity modernized the valley as did the coming technology and motorized farm equipment. Additional acres of sagebrush were cleared and put under cultivation. But the coming of WWII postponed the drilling of additional wells (Hedberg 203).

¹⁵ His father, Carlos, first came to Malta in 1876, then to Canada and back eventually to Malta.



Raft Rural Electric Co-op 2010

Telephones

John A. Elison was instrumental in getting the telephone system into Malta. He took a contract with the phone company to cut telephone poles for the lines. Elmo Elison and Lorin Horne were hired to cut the poles in Sublett. The poles were so long that they made the front of Lorin's old green Chevy truck so light that he couldn't steer it very good. They wired a pole underneath the truck and to the front bumper, leaving it sticking out about 15 feet in front. Then Merlin Horne and Elmo rode on the pole so Lorin could steer the truck to come around the dug-way road at the Sublett Reservoir. Once they got the poles to Malta, the poles had to be treated so they would not rot. To do that, the men built a fire pit eight feet across, put rocks around it, and then laid about five feet of the logs across to char them (Elison, Elmo).

Malta Land and Irrigation

In 1937, the LDS Church, through the church security plan, purchased the Keough Ranch,¹⁶

¹⁶ In the spring of 1916 some five thousand acres of land and the cattle were sold, leaving the Raft River Land and Livestock Company with 4200 acres. The Keough Brothers disposed of their range, sheep and cattle.

cutting it up into 60 acre tracts and selling on long-term payments to members of the church. The nearly 4000 acres made homes for 21 families—seven ranches in three units, including: Joe Barrett; Lorin Barrett; Shirley Barrett; Floyd Bell; Deward Bell; Dale Bell; Wesley Bronson; Elmo Elison; Lano Elison; Raymond Graham; Leonard Hall; Frank Lee; Milton Neddo; Edwin Paskett; Dean Rogers; Don Shaw; John O. Smith and sons—Vance, Verl, Jack and Dale; Lorenzo Tracy; Blaine Warr; Charles Warr and one Church farm. Later another 40 acres was added to each one, and then another 80 acres was added so the farms could sustain the families.

The Malta Land and Irrigation was organized with Mark Austin representing the LDS Church and John A. Elison as president. Groups of wells were dug for each unit. George Neddo and Frank Lee took the contract to dig the wells, and Leo Beyler and Elmo Elison did the work:

We would dig about a six foot hole by hand and bucket down to water; then with open-ended canned milk cans to make the perforations, we would run cement rings up to the top of the ground. Using a derrick and orange peel, or clam shell, we dug the gravel out of the inside of the cement rings, and as we did the rings would settle, making the well deeper and deeper. As the process was repeated, we eventually had a good well, 35-40 feet deep. We dug three wells in a row, running east and west, about 150 feet apart. Pumps were then installed in the wells with a line shaft on cement blocks and bearings with belts and pulleys and one gas motor to run all of them; the water flowed from all three wells into one main ditch so it made a large stream for irrigation. Later, several other wells were drilled with well rigs which enlarged the stream. Leo Beyler and Elmo Elison dug

three wells west of Floyd Bell's house, along the lane; three more were placed east of Joe Barrett's house over in the field, and three more south of Charles Warr's house (Elison, Elmo. 13-14).

Although no longer used, two of those wells can still be seen on the original Charles Warr farm.

Entertainment

Drought and the Great Depression cast a gloomy shadow over the valley. However, it was not all work and no play. Bishop John O. Smith encouraged everyone to quit work at noon on Saturday and spend time with the family. A baseball league was formed with teams from Malta, Idahome, Bridge-Strevell, Almo, Elba, Park Valley, Grouse Creek, Albion and Yost. People came from miles around to play and cheer their teams on! The teams had regular two-piece professional uniforms. The Williams brothers from Idahome were purported to be great players.

The stake presidency encouraged dances and each ward took their turns so there was a dance somewhere every Friday or Saturday night, and everyone went. During the holidays, each ward took turns and there were dances throughout the season. There were many good local orchestras including Glen Bates, Hosie Stout, Halls, Blacks, Don Shaw, and Dick and Elaine Anderson's orchestra which consisted of Don Parish, Emery Wink, Harvey and Blaine Wight, Bill Ivie (Killowatt) on drums and Wes Bronson on bass fiddle. Johnny Stone and Dave Jensen brought their orchestras from Burley and Utah. Dances were also held at the Grange Hall in Malta, the old hotel at Strevell and on the open-air dance floor at Naf. That floor was later covered and continued to be used well into the 1970s.

A typical dance program consisted of sixteen dances and four extra dances. The man danced the first

and last dances with the girl he brought and then he was expected to dance the other dance numbers with other girls. To get around that unwritten rule, couples would trade partners and then return to the original partner. The dance bands always played "Good Night Sweetheart" as the closing song (Udy, Mathias Cowley and Mary Lessey Udy).



Dick & Elaine Anderson making music!



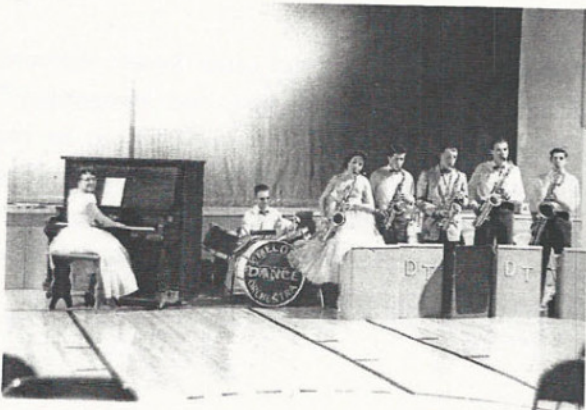
Melody Boys (plus one girl!)—Back row: Orville Udy, Theo Horne, Lester Tracy; Front row: Merlin Horne, Myrle Horne



*Fred & Hope Gardiner
Fred used to play the violin while Flossie Smith played piano.
Hope was a long-time teacher.*



Wesley Bronson and his bass fiddle; he played with various orchestras and his own sons and daughters



John Thompson's Melodee Dance Orchestra
Bonnie Tracy (piano); Gerald Bronson (drums); Sybil Beecher, Brent Udy, Bill Barret, Gar Elison and Kay Udy (sax) (not pictured—Irene Bell and Sherry Udy (trumpet)



Johnny Stone Orchestra

Wars and Military Service

Wars and rumors of war have not left our valley untouched. In World War I, the Big One to end all others, nine Malta boys served:



Walter Brockman, Earl Galliher, Bryan Scott, Truelock Wake, Ellis Wake, Elvin Hepworth, Bert Hutchison, Renaldo Jones, and Oscar Pierce

All but two returned home safely. Earl Galliher died on the train before they arrived at Washington, D.C. He was laid to rest in the cemetery at Sublett. A few years later, Lt. Oscar Pierce was killed in action in the Argonne Forest in France. His body was returned to the States and was buried in a cemetery in Twin Falls, Idaho. Frank Olson of Bridge, Idaho also served and was injured in WWI. He later became the Bridge Postmaster at his Rusty Spur Ranch. He once quipped to a reporter, "I won that war. . . . The Germans shot at me until they ran out of ammunition" (*A Pause for Reflection* 297).

World War II left almost no family untouched in the valley. Lora Thompson, wife of Bishop J. Henry Thompson, wrote a tribute for a farewell Party honoring the most recent inductees—Ed Hitt, Roger Neddo, Milo Peterson, Dean Gunnell and Norma Sanders. Over 60 young men and women are mentioned:

TRIBUTE TO OUR MALTA BOYS

By Lora Thompson

*They asked me to pay a tribute, to our young people
scattered afar,
And to their wonderful parents, who are giving
their all in this war.
Since America joined the great conflict, forced in
by the Jap's¹⁷ treachery,
We've rolled up our sleeves and went right to work,
to fight for our liberty.
There's Cavell who was at Pearl Harbor, when the
Japs came blazing in
And sank our ships, and destroyed our planes, how
terrible it must have been.
Then Frances Gunnel, Arduus Ward and Merton Paskett,
Willie Wilson, Travis Hawkins, and Dwight [Lee],
The Williams Brothers and the Butler Boys, very
early joined in the fight.
Then followed in quick succession, the Smith
brothers, Pinkey and Tom,
Teddy Merrill, the Shill boys and Arvil Beyler,
they say he's dropped many a bomb.
The six Hutchison boys, all cousins, who came from
good pioneer kin,
Bill, Cloyd and Robert the sergeant, also Duane
and Win.
Then too we must mention the Hitt boys, there's
Grant and Jud—and now Ed.
Dean Barrett and Allen and Ken Hastings, all
followed where others had led.
The Pierces have done their full duty, and sent to
the service sons three,
Monroe and Dale, and Sgt. Jim, and Mary Lou, a
cadet nurse is she.
There's Al Hunt and Leland Hepworth, and the
Lenninger boy from Bridge,
The Ospital boy, the six Barneses, who all show
their great courage.
There's Wes Adams and the Nelson boys, Corporal
Grant, then Len and DeVon,
Three others, Cecil, Floyd and Orson, from Sublett,
all joined the great throng.
There's our own Lt. Ruth Udy, an army nurse,
now overseas.
There's Dorothy, a WAC, and Okla, a WAVE, now*

¹⁷ "Jap's" is a derogatory term used at the time in reference to Japanese people after the bombing of Pearl Harbor.

*in Red Cross—Norma will be.
There are two who are missing in action, for them
our heads reverently bow:
Ralph Butler and Lt. Kent Horne—we still hope
they'll return somehow.
Now tonight we've come here to honor, those who
go their duty to do,
Mike, Roger, Eddie, Dean and Norma—we'll send
our prayers with you.
Let us hope for a brighter tomorrow when this
terrible war is done.
When the world will have done with its fighting,
and our loved ones return from afar,
Let us pray peace will reign on forever, and that
never again we'll have war.*

Lt. Kent Horne, Ralph Butler, Donald Rice and Staff Sergeant Travis Hawkins paid the ultimate price in WWII.

And wars continue. Next came Korea, Vietnam, Gulf War, Desert Storm, Iraq, and Afghanistan.¹⁸ Our own Ted Hodges, Jr's name is listed on the Vietnam Memorial Wall in Washington, D.C. along with the 50,000+ others. We echo Lora Thompson's plea: "Let us pray peace will reign on forever, and that never again we'll have war."

Some who made a difference

Looking back over the past century we realize that every person who lived here has contributed to the community and to the church in some way. In the hundreds and hundreds of pages of history and news clippings, binders of memorabilia, albums of photos, treasured family histories, and stacks of file folders, those faces and their stories bring smiles and tears. We have loved them all and miss them still. Every family, past and

¹⁸ See complete list of veterans in Appendix F

present, has a story to tell. Those of us today continue to add to the evolving saga. Still, there are some who made a difference—each in a unique way.



Edwin Hadfield Paskett and Naomi Neddo Paskett

President Paskett moved to Malta in 1919 when he was three years old. He married Naomi Neddo, the daughter of Isaac James and Alice Osterhout Neddo. He served 14 years as stake clerk with President E.S. Miller; then he was sustained as president of the Raft River Stake where he served for eight more years. He retired from Full Circle, Inc. He served as a member of the Board of Directors of the Raft River Rural Electric Coop for 14 years, six years as president. He was also president of the Idaho Coop Utilities Association for six years and was on the advisory council of the Bonneville Power Administration. Most of all, he was a friend to everyone. Naomi Paskett, too, served the community and church in many capacities including as president of the community education program. We are indebted to her for writing and collecting the history of the valley.



Glen and Ada Parke

Glen and Ada Parke contributed to the community and Cassia County as 4-H leaders, in the Lion's Club, the Grange, the Cassia County Fair Board, the church, DUP, and many other projects. They organized the first 4-H horse club in Cassia County.

Glen followed his grandfather, Charley Parke and father, Ether Parke, in ranching. When his father died in 1948, he bought the ranch from the family and expanded it to over 2700 acres with beef cattle. The ranch was listed as one of the 100 year ranches which have been owned and operated by the same family continually. Glen's pioneer heritage taught him hard work and perseverance. His love of horses led him to train the first cutting horse in Idaho. Glen and "Dynamite" won the state title in 1951-2. Glen served as president of the Intermountain Quarter Horse Association and as a

member of the Idaho Cattlemen's Association. He was inducted into the Livestock Hall of Fame.

Glen and Ada have both been instrumental in gathering and preserving history. Glen was a charter member of the Cassia Historical Society. Ada has contributed histories and photos for this and other historical publications.



Glen and Ada Parke at DUP Christmas party, 1990. Ada is wearing Margaret Parke's hat—circa 1870.

Today, Ada (90) is one of our ninogenerians in the Malta First Ward. The others are: Afton Nye (96) and Joe (95) and Luana (91) Barrett. In the Malta Second Ward are Genevieve Rose Udy Elison (90) and Otis Owen Edwards (90). Their perspective of our history is unique. It was their reality.



Afton Nye 96 years



Joe Barrett 95 years



Luana Barrett 91 years



Genevieve Rose Udy Elison 90 years

Not pictured: Otis Owen Edwards 90 years



Scott Gambel, son of Nibs Gamble, was born in Elba, Idaho on October 8, 1876. This picture was taken two months after his 78th birthday. On June 25, 1954, Scott Gambel took the Malta Primary Trail Builders on an historical excursion around the valley. Many of the pictures and our knowledge of the early history came from Scott's experience.



Malta Ambulance Crew

L-R back row: Clair Robinson, Dave Sundberg, Rick Neff, Mike Lewis, Larry Thompson; middle row: Vern Kempton, Joyce Rigby, Penny Thompson, Karen Fowles; front row: Warren Larsen—Burley Emergency Medical Technician, Dian Farley—instructor, Kerri Dschaak, and Floy Robinson.

Thank you to all past & present members!

Always on Call

There are those who spend their lives in service to others and to the community and church. Clarence and Velda Barrett were two who showed us the way. In a news article by Arvetta Savage, Clarence had become a "human landmark" because "he was fire chief, volunteer fireman, chief of police, scoutmaster, school custodian, area repairman and . . . cemetery sexton. . . 'I've been kidded that you can't get through Malta without seeing me,' he chuckled." Clarence had just retired after serving 20 years as city marshal and chief of police. He was a registered scout all of his life and was awarded the Silver Beaver, the top scouting award. "His most traumatic experience with law enforcement came in 1963 when he was called to an accident. The caller advised Clarence that 'a building roof had collapsed and there's two people inside.' It wasn't until Clarence was en route that he realized the 'two people' were his brothers [Shirley and Lorin].

Clarence was the first custodian at the new Raft River High School where he worked for 27 years before he retired. "He worked closely with the construction workers of that building in 1955 and . . . fixed the furnace and the plumbing, changed locks, replaced windows, painted walls and floors, fixed leaky roofs, mowed the lawns, poured concrete, hauled trash, and [took] care of any other repair and maintenance problems that [arose] in that building. His wife, Velda, also worked with him as they were janitors for the Malta Elementary School (Wallace, Lorraine).

We thank Clarence and Velda for collecting literally hundreds of news articles about everyone and everything that took place in the valley for the last 50 years. The material fills huge binders and has served as invaluable research for the compilation of this history. He also opened a museum in his home where he preserved an antique tool collection and other memorabilia. Sadly, upon his death, those

items were sold to various collectors. Malta lost a treasure in both the man and his collection.



Clarence and Velda Barrett

Fifty Years at the Dances: Richard & Elaine Anderson

It seems quite fitting that Dick and Elaine met at a dance. They continued all their lives to make dances exciting. After eloping to Logan, Utah to get married because Idaho law would have made them wait three days, they settled on the Anderson homestead where they lived for the first seven years of their life together. Their two sons, Dwaine and Blaine, were born there. "Richard farmed spring till fall and drove a truck during the winter. Elaine played for dances year round. The wages weren't bad. Fifty cents a dance for her, \$12 a week for him. Richard noted, 'We worked when others didn't.' . . . In those days a person had to be enterprising to get along. Richard put together their first car—a Model T Ford. He bought the frame for four silver dollars. The motor he got for another \$4, and a bottle of bootleg. He worked it all over and added an \$8 tire one at a time. The car lasted six years and cruised at 50 miles per hour. Finally, he sold it for \$239. . . . By 1941 they had saved enough to buy 160 acres of uncleared desert at Bridge, Idaho. . . . Finally the house was erected. And the answer to spending money came by way of

the dances they performed for the local community of Malta. Richard reflect[ed] on that first dance:

"Just the two of us played. We hardly knew anybody. We were scared to death. They just sat there listening. We didn't think they liked our music. We decided that if they didn't get up to dance by 9:30 we were going to make our excuses and go home. . . . It was embarrassing. When we decided to play one more number, everybody got up and danced. Then we went to town and had the best old time."

Later it came out that everyone enjoyed their music so much that people just sat to listen. That led to dances all over the countryside. . . . Dances full of music to dance to, or whoop to, or holler to, and especially to have fun to. For fifteen years they never stopped, week after week and town after town.

At times they joined with other musicians: Theral Parish and Roy Gunnell, and later with Harv and Blaine White, Bill Ivy, and Emory Winks. Each player brought a style of their own to the band. For instance, Bill Ivy, better known as "Killowatt" never missed a beat as a drummer even though he was known for, as Elaine put it, 'getting his snoot in the trough.' One church dance in particular brought its own kind of excitement for him. Killowatt had assured the band that he was dry that evening. Yet, when crossing the crowded dance floor with his box of drum instruments (which he carried in a beer box) the box's bottom fell out, spilling the contents noisily in front of the bishop. The humor of the incident was overshadowed by the band's embarrassment. Richard recalls, 'I thought for sure we'd get our walking papers. We just helped him set up and started playing.' Oddly enough, he really was sober this time."

Richard and Elaine went on to many other jobs—trucking, bookkeeping for Kraft Foods and the

REA—and then for twenty-seven years they operated Dick and Elaine’s Malta Service across the street from the Thompson post office. Richard later took on full-time work with the REA. Andersons played a prominent role in founding the Malta Volunteer Fire Department.

Written in celebration of Richard and Elaine’s 50th Wedding Anniversary in 1983 by their grandson, Larry D. Anderson

The Daughters of Utah Pioneers

On February 14, 1940, Chloe Sanders organized the Margaret-Martha Camp of the DUP, [named for Margaret Parke and Martha Hutchison, two early settlers]. Charter members of the camp: Chloe Sanders, Crissie Gamble, Flossie Smith, Celia Parke, Mabel Shaw, Ethel Cottle, Pearl Hutchison, Roxie T. Horne, Ruth Horne, Ida B. Horne, Luella Smith, Charlotte Hutchison, Emma Shaw, Martha Hutchison, Sarah Harper, Nellie Neddo, Lora Thompson, Hazel Scott, Ida Belnap and Myrtle Hutchison. A major purpose of the organization is to learn about and show appreciation for our pioneer heritage. “Their faith, courage and hard work laid the foundation for many of the material comforts and spiritual values we enjoy today” (Ethel Cottle qtd. in *A Pause for Reflection* 734).



*DUP L-R Back row: Sarah Wight, Irene Udy, Flossie Smith, Annie Gunnell, Alice Neddo Lois Pierce, LaVon Booth, Thera Harper
Front row: Clara Beyler, Ona Gunnell, Helen Kelsey, Estella Hutchison, Myrtle Hutchison, Ethel Cottle, Marion Taylor*

War Mothers



*At the home of Vivian Hawkins in Bridge, Idaho, 1960
L-R Back row: Lora Thompson, Helen Kelsey, ?, Della Williams, Jennie Wake, ?, Jennie Hitt, Annie Gunnell, Florence Ward, Flossie Lloyd, LaVon Booth
Front row: Margaret Ottley, Lois Pierce, Rose Galliher, Ethel Cottle, Vivian Hawkins, ?, Cecil Lowe*

The Raft River War Mothers were organized after WWII to give aid to veterans and to serve the community. Gold Star Mothers were those who had a son or daughter killed in military service. They put veteran flags on the graves on Memorial Day.

Relief Society



*Circa late 1950s
L-R Back row: Loraine B. Tracy, Marjoree Bronson, Nina Barrett, Helen Kelsey, Alice Neddo, Mathel E. Shaw, Thelma Rogers, Ethel H. Cottle, Lois Smith, Flossie Smith, Jennie Lee, Myrtle Hutchison, Viola Wight, Ada Parke, JoAnn Hill, Estella Hutchison
Front row: Charlotte Neddo Hutchison, Estella N. Hall, Josephine Neddo, Ann Nye, Lois Z. Elison, Mary Elison, Lona Hepworth, Myrtle Miller, Thera E. Harper, Velda H. Barrett, Marion N. Taylor*



Malta Singing Mothers circa early 1950s

L-R Back Row: Barbara Udy, Lora Thompson, Thelma Rogers , Volda Cobby, Inez Barlow, Flossie Smith, Naomi Paskett, Sarah Wight, Thera Harper, Lona Hepworth

Front row: Lois Whitaker, Viola Wight, Helen Kelsey, Velda Barrett, Ethel Cottle, Mary Udy, Lucille Graham, Thora Wake and Maureen Sanders at the piano

Boy Scouts of America

Ira Hall was the first scoutmaster in 1922 in the Malta Ward. They were Troop #1. The first scoutmaster in the Malta Troop #28 (the present troop #) was Verl Smith. Serving Troop #17 in the Malta Second Ward, Clarence Barrett became its first scoutmaster. Many leaders have helped our young boys and young men grow to be leaders in this and other communities. We are indebted to them. (A Mormon culture idea is that anyone who serves in scouting automatically inherits the Celestial Kingdom!) Because of the dedication of those leaders, the following have earned the Eagle Scout Award:

Malta Ward and Malta First Ward:

Barrett, Bridger
 Barrett, Kevin
 Barrett, Larry
 Bell, Wayne

Beyler, Marty
 Briggs, Randy
 Campbell, Blaine
 Campbell, James
 Campbell, Kevin
 Campbell, Roger
 Campbell, Vance
 Carpenter, Heber
 Cottle, Jay
 Cottle, Randy
 Cottle, Robert
 Crush, Joseph
 Darrington, Joel
 Edwards, Paul
 Fowles, Joseph
 Fredrickson, David
 Fredrickson, Larry
 Fredrickson, Steven
 Gardiner, Corby
 Gardiner, Matthew
 Gardiner, Nathan
 Gardiner, Spence
 Gilbert, Peter
 Goff, Brady
 Goff, Brandt
 Hall, Charles
 Hall, Corey
 Hall, John
 Hall, Kerry
 Hall, Richard
 Harper, Alan
 Harper, Ryan
 Hientze, Kia
 Higley, Heath
 Hill, Brian
 Hill, Ryan
 Holtman, Brook
 Holtman, Jeff
 Hope, Kevin
 Hope, Sperry
 Hurst, Douglas
 Hurst, Jason
 Lee, Nathan
 Lewis, Jonathan
 Neddo, Guy
 Neff, Billy
 Neff, Robert
 Nielson, Darin

Nielson, Peter
Ottley, Thane
Smith, Wade
Stephens, Trent
Telford, Erich
Telford, Kirk
Thompson, Robert (Bob)
Thompson, Sam
Tolman, Greg
Tolman, Greg
Tolman, Shannon
Tracy, Juan Jr.
Udy, Brent
Udy, Clain
Udy, Clint
Udy, Dan
Udy, Jared
Udy, Jerry Lynn
Udy, Luke
Udy, Mark
Udy, Mike
Udy, Rick
Warr, Alan
Warr, Jason
Yates, Jeremy

Malta Second Ward:

Bankhead, Brent
Bankhead, Tracy
Bankhead, Tracy
Beyler, Marty
Gilbert, Andrew
Greenwood, Bryce
Hall, Nathan
Hall, Spencer
Harper, Daren
Harper, Jonathan
Harper, Nolan
Harris, Eric
Harris, Sean
Hill, Ryan
Knight, Badger
Koyle, Neal
Larsen, Mike
Larsen, Ted
Larsen, Theodore
Lee, Ben

Lee, Jared
Lee, Jordan
Lee, Scott
Lee, Scott
Looke, Eric
Powers, Cody
Rigby, Paul
Scott, Jordan
Smith, Blake
Smith, Brandon
Smith, Bryan
Smith, Cory
Smith, Kevin
Smith, Ryan
Smith, Travis
Smith, Wade
Streeter, Jason
Streeter, Michael
Thompson, Randell
Thompson, Randy
Thompson, Rodney
Zollinger, Anthony
Zollinger, Austin
Zollinger, Todd

Well Done!

Getting to know those whose stories fill these pages gives us a knowledge of who we are. We are members or benefactors of those strong, noble and grand families, those families who share characteristics of those magnificent mountains around us. They bring to mind a poem by William Stafford entitled "Silver Star." As you read, compare the mountain's existence to your own. You may find similarities in the challenges faced and the sought-for reward.

Silver Star

By William Stafford

*"To be a mountain you have to climb alone
and accept all that rain and snow. You have to look
far away when evening comes. If a forest
grows, you care; you stand there leaning against
the wind, waiting for someone with faith enough
to ask you to move. Great stones will tumble
against each other and gouge your sides. A storm
will live somewhere in your canyons hoarding its
lightning.*

*If you are lucky, people will give you a dignified
name and bring crowds to admire how
sturdy you are,
how long you can hold still for the camera. And
some time,
they say, if you last long enough you will hear God;
a voice will roll down from the sky and all your
patience
will be rewarded. The whole world will hear it:
'Well done.'"*

We add our own "Well done!" to those whom we honor in this book.

APPENDIX A

In the Provo Utah 13th Ward on February 14, 1977, the High Priest's lesson was on "revelation." Bishop J. Henry Thompson (81 years old) related this experience:

"It reminded me of experiences I had as Bishop of the Malta Ward. On one occasion, a mission president back East called me on the telephone and advised me he would have to send a missionary from our ward home for lack of funds. I asked him to delay action and let me see what I could do about it.

I called Brother Heber J. Zollinger, our presiding elder in the Sublett Branch, and asked him to go and see a certain brother and solicit missionary funds. Presently he called me on the telephone and said Brother So and So had given him a check for \$250. I was able to send funds for the missionary until he finished his mission.

I suppose this incident speaks for itself, but what amazes me is that I was able to have the right contact made to produce the needed money instantly. I am sure that the inspiration to ask the right man came to me because of my ordination as Bishop of the ward, so the missionary would not have to be released before his time. Certainly the name of the man who would make the needed donation at the time it was needed was put into my mind by Him. To me this was a revelation, and a potent one."

APPENDIX B

Post Master & Officers in Charge (OIC) 1883-2010

April 2, 1883	Julia Ada Condit
May 12, 1894	Mary Condit
May 23, 1895	Maria L. Haller
April 5, 1901	Herbert M. Condi
April 25, 1907	Leonard M. Condit
September 27, 1910	Jesse L. Hubbard
February 3, 1915	Dewey C. Strunk
June 11, 1915	Ethel L. Hall
September 16, 1916	Ethel Hall Cottle
August 27, 1919	George R. Richins
July 1, 1921	J. Henry Thompson (OIC)
September 1, 1923	J. Henry Thompson
July 14, 1961	Ruth E. Williams (OIC)
August 10, 1962	Dale Oscar Pierce (OIC)
September 20, 1962	Dale Oscar Pierce
August 2, 1999	Dana R. Evans (OIC)
October 23, 1999	Kenneth J. DeNaughel
May 31, 2003	Laurie Darrington (OIC)
September 20, 2003	Judy M. Wickel
April 8, 2005	Kayleen Mahoney (OIC)
August 6, 2005	Kayleen Mahoney

APPENDIX C

Bishops and Bishopricks 1910-present

1910-1914



Bishop Thomas E. Taylor, Jr.
1st Counselor—Jess L. Hubbard
2nd Counselor—Robert Hutchison
Ward Clerk—Alfred C. Hubbard/Isaac J. Neddo, Jr.

1914-1915

Bishop Thomas E. Taylor, Jr.
1st Counselor—Robert Hutchison
2nd Counselor—Isaac James Neddo, Jr.
Ward Clerk—Isaac James Neddo, Jr.

1915-1916



Bishop Aaron Zollinger
1st Counselor—Joseph Rasmussen
2nd Counselor—Isaac James Neddo, Jr.
Ward Clerk—Joseph Rasmussen

1916-1925



Bishop Isaac James Neddo, Jr.
1st Counselor—John O. Smith
2nd Counselor—Leonard P. Hall (1918-1925)
Ward Clerk—Richard B. Harper (1920-1925)

1925-1936



Bishop Orson Sanders
1st Counselor—John O. Smith
2nd Counselor—Ira K. Hall (1928-1930)
Ward Clerk—Harry A. Shaw, Jr.

1936-1941



Bishop John O. Smith (died of leg amputation)
1st Counselor—Rawlins J. Harper
2nd Counselor—Lorin R. Horne
Ward Clerk—Fredrick Gardiner

1941-1944



Bishop Rawlins J. Harper
1st Counselor—Lorin R. Horne (1941)/
Ephraim S. Miller (1943)
2nd Counseor—Orville Udy
Ward Clerk—Kenneth Hastings

1944-1947



Bishop Shirley H. Barlow
1st Counselor—Lano Elison
2nd Counselor—Wesley Bronson
Ward Clerk—Afton D. Nye

1947-1955



Bishop J. Henry Thompson
1st Counselor—George W. Neddo
2nd Counselor—Harvey J. Wight
Ward Clerk—David Tell Taylor

1955-1961

Bishop J. Henry Thompson
1st Counselor—Harvey J. Wight
2nd Counseor—Charles H. Warr
Ward Clerk—David Tell Taylor/Wallace O. Briggs

1961-1968



Bishop Harvey J. Wight
1st Counselor—Charles H. Warr/Wallace O. Briggs
2nd Counselor—Delwin J. Harper
Ward Clerk—Reid Tew Allred

1968-1971



Bishop Wallace O. Briggs
1st Counselor—Golden Gardiner
2nd Counselor—Buddy Ward
Ward Clerk—

1971-1977



Bishop Delwin Jay Harper
1st Counselor—Jay Cottle
2nd Counselor—Cleve G. Smith/Earl Brent Udy
Ward Clerk—Kenneth Crump/Rodney Hall

Division of Ward: Malta 1 and Malta 2

Malta First:

1977-1978

Bishop Delwin Jay Harper
1st Counselor—Earl Brent Udy
2nd Counselor—Jack Homer Hill
Ward Clerk—Rodney Hall

1978-1983



Bishop Jerry R. Udy
1st Counselor—Early Brent Udy/Dean Fredrickson
2nd Counselor—Michael R. Telford
Ward Clerk—Elmo Elison

1983-1988



Bishop Albert Jay Cottle
1st Counselor—Rod Garner/George Darrington
2nd Counselor—Stan Campbell
Ward Clerk—

1988-1994



Bishop Alan Jay Harper
1st Counselor—Richard Lance Udy/Ronald Holtman
2nd Counselor—Larry Vern Kempton
Ward Clerk—Zeldon Nelson

1994-2000



Bishop George K. Darrington
1st Counselor—Devan William Tolman
2nd Counselor—Peter Grush
Ward Clerk—Juel Hurst

2000-2003



Bishop Devan William Tolman
1st Counselor—Juel Hurst
2nd Counselor—Terry Briggs
Ward Clerk—Joseph Barrett, Jr.

2003-2008



Bishop Juel Hurst
1st Counselor—Michael R. Telford
2nd Counselor—Kirtland Yates
Ward Clerk—Jeremy Nelson

2008-



Bishop Jeffrey C. Johnson
1st Counselor—Ted Higley
2nd Counselor—Bryce Campbell
Ward Clerk—Lane Schumann

Malta Second:

1977-1982



Bishop Cleve G. Smith
1st Counselor—Steven L. Blake/ Marvin Hall (1980)
2nd Counselor—Marvin Hall/Gary Harper (1980)
Ward Clerk—Newell Norman

1982-1987



Bishop Gary B. Harper
1st Counselor—Sid Norman/Jim Powers
2nd Counselor—Jim Powers/Stan Campbell
Ward Clerk—Olani Wallace

1987-1992



Bishop Val Anderson
1st Counselor—Jack Wight
2nd Counselor—Ross Labrum/Gordon Henrie
Ward Clerk—Roland Zollinger

1992-1997



Bishop Dennis Lee
1st Counselor—Jim Powers/Kim Smith
2nd Counselor—Kim Smith/Cregg Smith
Ward Clerk—Jim Rigby

1997-2003



Bishop Todd Harris
1st Counselor—Jeff Greenwood
2nd Counselor—Brad Hutchison
Ward Clerk—Mike Peglau/Steve Rigby

2003-2008



Bishop Max Jones
1st Counselor—Jim Powers
2nd Counselor—Darin Harper
Ward Clerk—Russell Zollinger

2008-2010



Bishop Pat Manning
1st Counselor—Mike Christianson
2nd Counselor—Kurt Harris
Ward Clerk—Gus Oman

2010-



Bishop Brad Hutchison
1st Counselor—Mike Christianson
2nd Counselor—Cregg Smith
Ward Clerk—Gus Oman

APPENDIX D

Malta Ward Members 1910

Adams, Wm

Eliza Anna Horn

Wm Leroy

Melvin

Ida Leora

Alphin, Samuel

Lucy Hepworth

Annie May

Backman, Clarence W

Backman, Walter E

Backman, Chas Swen

Bankhead, Hillary Napoleon

Hannah James

Benson, George, Harry

Benson, Violet Sarah

Benson, Gladis Martha

Bills, Alexander

Guy

Hattie

Harold

Alice

Stella

Barnus

Bishop, Richard

Maria

Booth, Harrison

Gertrude

Leslie

Vera

Eldon

Calvin

Wesley

Booth, Christina

Booth, Amelia

Carnahan, MA Burton

Christopherson, Hans

Matilda

Orville

Torbin

Deo

Lawrence

Christoffason, Heber Olaf

Coweford, Lucy Janet Harris

Fife, Joseph

Margret Anderson

Margret

Gamble, Sarah

Gamble, Helena Scott

Gamble, Christiania Backkman

Glenn, Jane Hepworth

Goody, Thos Arthur

Martha Jane Baissory

Hall, Lenard A

Charlotte Morris

Ethel Lenora

Esther

Ira

Sarah Arvilla

Vera Grace

Hall, Alonzo

Hall, Miles Francis
Mary Elizabeth Wake
Noble Dewey
Robert Afton
Mary Opal
Clifton
Rocha
Thelma Oriam

Hanson, Alfred Lewis
Lana Macia Rasmussen

Haskell, Jas E
Elizabeth R Curtis
Henry Chester
Irvin E
Raymond L
David E
Maida M

Hastings, George Dallas

Hepworth, Russell K

Hepworth, John W
Mahalo Becker
William Seth
John Alvin
Oren
Lathel
Joseph
Squire
Alvin

Hepworth, Alice

Horn, Clara Verda

Horn, Daniel
Aarcis
Elvira
Sarah
Essie
Ethel
Edwin
Clarence

Hubbard, Jesse George
Stella B

Hubbard, Alfred
Julia E

Hutchison, James

Hutchison, Melvin

Hutchison, Sylvester

Hutchison, Charlotte Neddo

Hutchison, Robert
Martha J Lloyd
Annie

Hutchison, Agnes

Hutchison, Lester Leonard

Hutchison, Hannah

Jensen, Martin Jaime
Melvin Leroy
Mary Floretta
Delbert
Minnie
Mable

Jensen, Ruel James

Kinsley, Jesse

Kinsley, Lewis
Anna C Jewkes

Kisthley, Elizabeth S Lythore

Kossman, Edward Clifford

Kossman, Ferrell

Kossman, Gerald Tenlock

Kristofferson, Pearl Leora

Lloyd, Mahy

Lloyd, Lavon

Lloyd, Benjamin

Elizabeth Ann Thomas

Benjamin Earl

Harry Thos

Fern

Martha

Jennie

Elanor

Emma

Lounsbury, Sarah Wake

Lounsbury, Ressa

Loursbury, Ralph Orien

Lyns, Albert R

Annie Diapain

Marshall, Kate Parke

Wm Calvin

Jno

Alice

Ethel Parke

Mortenson, John

Alice Cruckley

Lawrence A

Lucille

Rhoda

Neddo, Isaac James Junior

Alice Osterhout

Estella Pauline

Isaac James Jr.

Milton Leroy

Nielson, Peter J

Mary

Nora Jensen

Edwina

Christina

Clara Haskill

Ephraim

Nielsen, Cassie Louise Brodine

Nielson, Jas. P

Parke, Joseph Lemons

Peterson, Wilbud Jas

Peterson, Evelyn Ruth

Peterson, Jno. Albert

Olsen, Anna Horn Adams

Olson, Arnold R

Olson, Leslie R

Olson, Ole Molton

Minnie

Olson, Otto

Sylvia Bucks

Clarisia May

Earl Otto

Osterhout, Wayne Lourzo

Ida Sfocke

Tressie G

Terry Eugene

Osterhout, Thelma

Rasmussen, Jas Peter

Rasmussen, Niels A

Ivie G. Neddo

Esther Ruth Wheatley

Rasmussen, Niels Peter

Rasmussen, Joseph
Stella A Law

Sanders, Elizabeth E Cheaney
Geo Hen

Sanders, Gladys Ioni Brown

Scott, Hasel Lloyd

Shaw, Charles H
Emma Smith
Eva
Chas Alfred
Bernice Emma

Shell, Jesse
Lavilla
Dallas Chas
Jesse Duncan
Clifford

Smith, Benjamin Franklin

Smith, Emma O Bray

Smith, Lillian L. Osterhout

Smith, Elmer

Smith, Thomas R

Smith, Jno O
Flossie
Inez Pearl

Smith, Jos. O
Lucille Boodley

Stevenson, Thomas
Edna Wilcox
Verna Wilcox
Alta

Stevenson, Isaac

Stevenson, Able W
Clara B Dufley

Stevenson, Samuel
Charlotte C Hooper
J. Miles

Taylor, Thomas Junior
Lena Nelson
Floyd
Theora

Taylor, Wesley Dean

Taylor, Winston Robert
Lizzie Louise Banner

Thompson, Henry D
Elsina
Merle

Wake, Geo W
Laura Mortensen
Hazel Lavern

Ward, Melvin M
Emily Pearl Mortensen

Wilson, Aaron Wilford

Wilson, Mary Campbell

Young, Wm C
Sarah Ann Bingham

Zollinger, Aaron Arthur
Hannah Pearl Neddo

APPENDIX E

Stake Presidencies:

Cassia Stake:

1910-1915

President William T. Jack
1st Counselor—John L. Smith
2nd Counselor—William T. Harper

Raft River Stake:

1915-1925

President John Alfred Elison
1st Counselor—Joseph Harper
2nd Counselor—Henry Belknap (1915-1920)
Joseph S. Barlow (1920-1925)
Isaac James Neddo, Jr. (1915-1925)
Stake Clerk—George R. Richens (1915-1922)
John R. Horne (1922-1925)

1925-1938

President John A. Elison
1st Counselor—Joseph Harper
2nd Counselor—Isaac J. Neddo, Jr.
Stake Clerk—John R. Horne

1938-1944

President John A. Elison
1st Counselor—Isaac James Neddo, Jr.
2nd Counselor—D. Chester Loveland
Stake Clerk—John R. Horne (1938-1939)

1944-1959

President Ephraim S. Miller
1st Counselor—Rawlins J. Harper
2nd Counselor—O. Ross Sanders (1944-1953)
Afton D. Nye (1953-1959)
Stake Clerk—Edwin Paskett

1959-1966

President Edwin Hadfield Paskett
1st Counselor—Donald W. Chandler
2nd Counselor—Charles Heiner Warr
Stake Clerk—Albert Jay Cottle

1966-1969

President Edwin Hadfield Paskett
1st Counselor—Job Coleman Steel (1966-1967)
Jacob Blaine Wight (1967-1969)
2nd Counselor—Jacob Blaine Wight (1967-1969)
Jay Lamb Nielsen (1967-1969)
Stake Clerk—Jay Cottle

Cassia East Stake:

1969-1978

President Joseph A. Gillett
1st Counselor—Jay Lamb Nielsen
2nd Counselor—Horace E. Coltrin
Stake Clerk—William Gene Baxter

1978-1979

President Joseph A. Gillett
1st Counselor—Horace E. Coltrin
2nd Counselor—Albert Jay Cottle
Stake Clerk—Elden Lind

Declo Idaho Stake:

1979-1988

President Leo Winfield Hurst
1st Counselor—Delwin Jay Harper
2nd Counselor—Del Barrett Garner
Stake Clerk—Elden Lind

1988-1998

President Del Barrett Garner
1st Counselor—David R. Price
2nd Counselor—Gary B. Harper
Stake Clerk—Rodney Lind

1998-2001

President William K. Mendenhall
1st Counselor—Dee L. Jones
2nd Counselor—Alan Jay Harper
Stake Clerk—Curtis Pope

2001-2010

President Gary B. Harper
1st Counselor—Jack Hunsaker
2nd Counselor—Danny Turner
Stake Clerk—Jay Dallan Christensen

APPENDIX F

Veterans:

Spanish American War:

Riblett, Frank

World War I:

Brockman, Walter
Galliher, Earl
Hepworth, Elvin
Hutchison, Bert
Hutchison, Sylvester
Jacobs, Swen Howard
Jones, Renaldo
Olson, Frank
Pierce, Oscar KIA
Scott, Bryan
Wake, Ellis
Wake, Truelock

World War II: (includes military service to Korean War)

Adams, Wes
Allred, Reid
Barnes, Charles
Barnes, Dean
Barnes, Elvon
Barnes, Jim
Barnes, Richard
Barnes, Robert
Barrett, Dean
Baxter, Gene (+ Korea)
Beyler, Arvil
Bigler, Arnold (Bud)
Boden, Ellis
Briggs, Wallace
Brinkman, Don
Butler, Cliff
Butler, Ralph KIA
Carnahan, Carlos Jr.
Dare, Ruth Udy
Durfee, Mark
Edwards, Otis
Gardiner, Golden

Gardiner, June
Garrett, Okla Alison
Gill, Loyal
Graham, Raymond
Gunnell, Dean
Gunnell, Francis
Gunnell, Grant
Ham, Frank
Hastings, Kenneth
Hawkins, Travis KIA
Hepworth, Leland
Hill, Jack
Hitt, Ed
Hitt, Grant
Hitt, Jim (Pud)
Hodges, Ted
Horne, Kent KIA
Huchison, Cloyd
Hunt, Al
Hutchison, Bill
Hutchison, Dave
Hutchison, Duane
Hutchison, J.D.
Hutchison, Lester
Hutchison, Margaret (WAC)
Hutchison, Robert (+ Korea)
Hutchison, Winston (+ Korea)
Ivy, Bill (Killowatt)
Jacobs, Sid
John, Deward
John, Floyd
Jones, Harold
Kempton, Ray
Kossman, Fred M.
Lee, Dwight
Lenniger, George
Martin, Byron (Duke)
Martin, Elmer C.
McFarland, Kenneth
McGhie, Glen
McGraw, Allen
McNeely, Preston
Merrill, Teddy
Miller, Gene
Neddo, Roger
Nelson, Devon
Nelson, Grant
Olson, Darwin
Olson, Dorsel
Olson, Floyd
Ospital, Sam
Ottley, Dean

Paskett, Cavell
Paskett, Jesse
Paskett, Merton
Peak, Mary Lou Pierce
Peterson, Cecil
Peterson, Milo
Pierce, Dale
Pierce, Jim (+ Korea + Viet Nam)
Pierce, Monroe
Platt, Leigh
Powers, Cecil
Rasmussen, Melvin (Moon)
Rice, Donald KIA
Rice, Everett
Rogers, Raymond
Sears, Betty Lou
Sears, Wally
Sexton, Allen
Shill, Earl
Shill, Fred
Smith, Clifford (Pinky)
Smith, S.N.
Smith, Tom
Sundberg, Guy
Tannehill, Les
Tanner, Doug
Teeter, Cleo
Thompson, Dorothy (WAC)
Tracy, LaVere
Van Leeuwen, Norma Sanders
Ward, Ardu
Ward, Charles
Williams, Bill
Williams, Bob
Williams, Oliver
Wilson, Willie
Winks, Emery
Zollinger, Orson

**Korea, Viet Nam, Desert Storm, Gulf War, Iraq,
Afghanistan & continuing conflicts:**

Adams, Wayne
Anderson, Duane
Asher, Dale
Baker, Zenith
Bankhead, Gerald
Barrett, Terry
Baxter, Gene (+ WWII)
Bennett, Jim
Beyler, Grant
Boden, Dave

Bodily, Jim
Booth, Collin
Briggs, Jeff
Briggs, Terry
Brinkman, Dave
Buckway, John
Buckway, Mark
Campbell, Joe
Campbell, Stan
Carnahan, Darrell
Carnahan, Glen
Carnahan, Lafayette (Bud)
Collins, Stanley Boyd
Cottle, Albert Jay
Cottle, Robert
Darrington, Joel
Edlund, George
Fonnesbeck, David
Fowles, Joey
Fredrickson, Dean
Galliher, Earl
Hall, Morris
Hall, Parley
Hall, Rodney
Hansen, Cornell
Hill, Merrill
Hitt, Brian
Hitt, Howard
Hitt, Richard (Dicky)
Hitt, Tom
Hodges, Ted Jr. KIA
Holtman, Kent
Hope, Bob
Hutchison, Billy
Hutchison, Harold
Hutchison, Odell (Tinker)
Hutchison, Richard. D.
Hutchison, Robert (+ WWII)
Hutchison, Winston (+ WWII)
Jardine, Darwin
Jones, Glenada (WAC)
Jones, Glendon
Jones, Ray
Judd, Ron
Kossman, Carey
Kossman, Gayle
Kossman, glen
Kossman, Marvin
Larimer, Darrell
Lee, Elson
McGhie, Todd
Neddo, Delbert
Neddo, Guy

Neddo, Keith
Neddo, Phillip
Neddo, Roger Jr.
Neff, Robert
Nielsen, Darin
Ostberg, Sheldon (Ickey)
Ostberg, Wesley (Dick)
Ottley, DeLoy
Paskett, Darrell
Patterson, Sam
Pierce, Charles
Pierce, Jim (+ WWII and Viet Nam)
Powers, Jim
Rasmussen, Dee
Savoie, Richard
Shill, Doug
Smith, Joseph Carl
Sundberg, Dave
Sundberg, Keith
Taylor, Boyd
Telford, Mike
Thompson, Robert (Bob)
Tracy, Bryce
Tracy, Dee
Tracy, Kevin
Tracy, Victor
Ward, Bud
Ward, Calvin
Ward, Denny
Ward, Grover (Dode)
Ward, Wallace (Wally)
Warr, Melvin A. (Skeet)
White, Bobby
White, Dave
Wight, Gale
Wight, Harold
Williams, Ralph

APPENDIX G

Malta 1st Ward Members 2010

Adams, Merle W

Anderson, Tim

Bake, Gary
Valerie

Sean
Katelin
Derek
Melissa
Justin

Barnes, Paul
Kaitlin

Barrett, Joseph
Luana

Barrett, Joseph Jr.
Sue
Bridger
Dylan

Bingham, Zeb Dwight
Jamilyn
Brooke
Zayne

Booth, Max
Michael

Bowman, Ryan Dale
Ranae
Kennedy
Garrett
Hannah
Quincy
Kamryn

Branch, Nolan
Luann
Marie

Bricker, Janet Kay
Biglieni, Belle

Bricker, Sonja

Briggs, Terry
Darlene

Brinkman, David Lavern

Bruesch, Nicole
Bailey

Buckway, Sherry

Campbell, Ben
Melissa
Dannie
Olivia
Dylan
Ross

Campbell, Stan
Diana

Campbell, Mont
Cora Lee

Campbell, Bryce
Jodi
Brooke
Sadie
Megan
Tyler

Campbell, John
Beth
Haven
Naomi
Porter

Carlson, Dell
Betty

Carpenter, Robin
Dallas
Jacki
Amanda

Christiansen, Kevin
Wendy
Perkins, Samantha
Perkins, Cameron
Perkins, Nicholas
Perkins, Ethan
Perkins, Paige

Clark, Delbert
Leacia

Coronado-Garcia, Saul
Audelina
Wendy
Saul
Brayan

Cottle, Jay
Julene

Crippen, Doug
Carma

Cluff, Shannon K.

Darrington, George
Denise

Deters, Bart
Melanie
Lindsey
Lance

Dewsnup, Garrett
Carolyn
Riley
Alyssa
Casey Jo

Dilworth, LeGrand
Cheryl

Esquivel, Jose
Christene
Angie
Jayden
Sierra
Reigan

Fowles, Gary
Karen

Freestone, Doug
Lucy

Gardiner, Golden
Barbara

Gardiner, Spencer
Dara
Jared
Alexis
Luke

Godfrey, Robert
Kayla

Goff, Brandt

Grush, Joseph
Natalie
Summer
Tristan
Taylen
Teegan
Tenny
Tevin
Shandi

Grush, Peter
Sylvia

Hall, Morris
Rachel

Hall, Richard Willis
Marlene
Jesse
Lillian
Zebedee
Estella

Hall, Rodney
Jane

Harper, Alan
Beverly
Derek

Harper, Jay
Jeanette

Harris, Richard
Shirley

Higley, Hank
Lacey
Zane

Higley, Heath
Dawn
Brogan
Bruen
Hannah

Higley, Ted
Betty Ann

Hitt, Tom
Marie

Hobson, Brent
Theresa

Holtman, Brook
Stacy
Wyatt
Whitney
Wynter
Wil
Wacey

Holtman, Ron
Susan

Hurst, Juel
Kammy
Doug
Jason
Levi

Hurst, Ross
Gwen
Forest

Hutchison, Bonnie

Hutchison, Charles

Hutchison, Curtis

Hutchison, Jocko
Jones-Stauffer, Chelsen
Jones, Austyn

Hutchison, Kenneth
Kim

Hutchison, Lindsey
Brice, Mandison Shae

Hutchison, Sharon

Jensen, Alan
Wendy

Johnson, Jeffrey Craig
Sara
Elliott

Johnson, Jeff
Jeanette

Jones, Beth

Jones, Glenn
Hazel

Jones, Karen
Brandy

Jones, Lorin
Rebecca
Leslie

Jones, Rocky Aaron

Keetch, Blair
Teresa

Kempton, Coralee
Kandice

Lewis, Mike
Sherry
Jonathan
Justin
Jerod
Jessica
Jed
Jaycee

Loughmiller, Heber
Julliann
Tony
Ryan
Sean

Loughmiller, Jordan
Whitney

Nef, Jerik
Alecia

Neff, Rick
Margie

Nelson, Alex

Nelson, Bill
Josefina

Nelson, Jeremy
Tonya
Matthew
Ryan
Aliza
Trevor
Katrina
Rebecca

Nelson, Josh
Jaime
Ashlynn
McKenzie
Caleb
Nicole
Shandlee
Brinnley

Nelson, Merrell

Nelson, Zeldon
Mary Lynne

Nielson, Trent
Annette
Kaden
Tianne
Addalynn

Nye, Afton

Nye, Andre'
Carol
Cody

Ochoa Soto, Osvaldo
Mayra
Naomi
Osvaldo

Osterhout, Kerry
Loretta

Parke, Ada

Parke, Bob
Karla

Rex, Kallan
Rosanne
Preston
Abigail
William
Madison

Rigby, Joyce

Rodriquez, Benito
Lorena
Jose-Luis
Jaime
Jonathan
Jasmine

Rose, Janica
Avory

Savoie, Ricchard
Bonnie

Schumann, Lane
Cami
Lauren
Carson
Justin
Caroline

Serafin-Sanchez, Celso
Luz Maria
Katia
Kelvin

Sessions, Jeff
Jenifer
Tiffany
Wyatt

Slagle, Paul

Smith, Jake
Alisha
Hailey
Cody
Annie
Jaycee
Brookley
Daisy

Smith, Ryan
Jessica
Engle, Matthew
Engle, Ethan
Straubharr, Tatem
Zachary

Steed, Gary
Sonia

Steed, Grant
Crystal
Tavanie

Sundberg, David

Sundberg, Nadyne

Teeter, Brian

Teeter, Delsie

Teeter, Terry
Millie

Telford, Mike
Mary Alice

Thomas, Jeff
Robbin
Laci
Bill
Danielle

Tolman, Devan
Elaine

Tracy, Bryce
Sharon

Udy, Jerry
Delma

Van Meter, Sara

Villalobos, Luis Manuel
Celia
Sofia
Luis
Natalie

Ward, Charles

Ward, Richard
Cindy

Warr, Olene
Janis

Warr, Jason
Wendee
Kaleb
Kassandra

Whitaker, Cassidy
Amber
Laci
Tegan

Whitaker, Denny
Cleta

Whitaker, Travis
Jennifer
Taylor
Taryn
Tani
Trace
Tate
Treg

Whiting, Margaret

Wight, Gale

Wilson, Robert
Phyllis

Winslow, Milton
Rosemary
Allen
Orin
Janell
John
Melanie
Dustin

Yates, Katherine

Yates, Kirtland
Janet

Malta 2nd Ward List 2010

Anderson, Brett
 Connie
 Brandi
 Mikayla

Anderson, Ruth

Baker, Mark
 Diane
 Chantell
 Marka
 Paizli

Baker, Paden

Bankhead, Janet

Bankhead, Jerry
 Lisa
 Justin

Bankhead, Tracy
 Crystal
 Trevor
 Bryson

Bendele, Warren
 Leslie
 Betty Jean Adams

Bennett, James
 Jeanette

Bernad, Trina

Beyler, Clara

Beyler, Martin
 Carie
 Mandie
 Cort
 Alyssa
 Jarom
 Sarah

Biggs, Brent
 Joseph

Buck, Shayne
 Lindsay
 Cory
 Holly
 Logan
 Angie

Cagle, Carma

Cahoon, Edna

Carson, Nate
 Desiree
 Ryker

Chatterly, Rhonda
 Andrew Allen Fenn

Christensen, Michael
 Brooke
 Karlee
 Kaybree
 Ashlee

Collins, Stan

Cooper, Mary Jo

Davies, Tiffany

Earl, Bret
 Karen
 Jade

Edwards, Joseph

Edwards, Otis

Edwards, Paul
 Karen
 Clifford James

Elison, Gevevieve

Elliott, Travis
 Amber
 Dillon

Erickson, Dallas

Tiffany

Wasey

Braegon

Cutler

Tessaly

Ainsly

Evans, Edward

Sheena

Rylan

Rodee

Fehlman, Grant

Freideman, James

Karen

Fridal, Chad

Cassi

Jordan

Jacob

Fridal, Vera Lynne

George, Charlane

Gilbert, Peter

Audra

Kendal

Luke

Jesse

Goodman, Betty

Greenwood, Jeffrey

Risa

Hailey

Paige

Hall, Marvin

Ann

Hansen, Cordell

Rylie

Alexmaree

Jordynlyn

Harper, Darin

Tayna

Brandon

Christopher

Kyle

Heidi

Tyler

Harper, Gary

Susy

Harper, Marian

Harper, Ronald

Jaylin

Race

Symaron

Cache

Chesney

Harris, Kurt

Jackie

Ty

Ashley

Jaxon

Amber

Harris, Todd

Cindy

Elle

Henrie, Gordon

Darlene

Hicken, Roger

Dorris

Hitt, Brian

Jillian

Haven

Hitt, Scott

Amanda

Sidney

Kolten

Kayden

Hodges, Teddy

Floy

Hutchison, Brad
 Tamara
 Brecann

Hutchison, Brodie

Hutchison, Delbert
 JoDean

Hylton, Dennis

Jafek, Dirk

Jones, Harold
 Sherraldine

Jones, Max
 Diane
 Jared

Jones, Joe
 Erica
 Braxton
 Reagan
 Addi
 Tait

Knudsen, Colebee
 Monica
 Kagen
 Jessi
 Sadee
 Kaylee

Knudsen, Shawn

Larsen, Duane
 Diann

Lee, Dennis
 Helen

Lightfoot, Robert
 Marilyn

Loock, Kent
 Tina

Mahas, Sharon

McFarland, Janet

Neddo, Alvin

Olsen, Rickey
 Sylvia

Oman, Gus
 Ranae

Pace, LaDean

Parke, Ryan
 Lacey
 Kenidy
 Karsen
 Kestley
 Kimbrey

Powers, Cade

Powers, James
 Janet

Powers, Todd
 Tina
 Cheyenne
 Isaac

Powers, Tyler
 Jill
 Zachery
 J W

Price, Clint
 Megan
 Parker

Rasmussen, Dee
 Ruth

Rasmussen, Larry

Rasmussen, Romae Anderson

Rigby, Jim
 Jeanette

Rigby, Steven
 Ann

Rigby, Tony
Ria
Tosha
Riley
Sam

Robinson, Kent

Robinson, Naomi
Kimberly

Schorzman, Kate

Scott, Greg
Andrea
Jordan
Holly

Smith, Beulha

Smith, Cleve
Karol

Smith, Cregg
Carma

Smith, Norman
Linda

Smith, Osmer

Smith, Kim
Debra

Southern, Kirk
Sherry
Alle Laurinda

Southworth, Dwain
Carolyn

Spaeth, Stacey
Justin Dean Teeter
Clay Garrett Teeter
Ryan Scott

Spencer, Dallan
Jennifer
Rylee
Bodee
Kole
McCoy

Steed, Garth
Jewelee
Gevin
Garen
Amberlee
Ashlee
Shaylee
Gunner

Streeter, Mark
Connie
Sean

Streeter, Michael

Tanner, Douglas
Kathleen

Taylor, Cedric
Sonya

Taylor, Boyd
Wilma

Telford, Todd
Ellen
Bailey
Tanner

Thomas, Ike
Shanna
Mesa

Thompson, Larry
Penny

Thornton, Brock

Thornton, Kim

Tracy, Kevin

Tuckett, Cameron
Jalynn
Holten
Alexis
Austin

Tuckett, Larry

Vansant, Violet Marie

Vernon, Iva

Ward, Garry
Tressa

Whitaker, Andrew

White, Cathy Jean

Wickel, Ilene

Wight, John
Elmoine

Wight, Joseph
Tina
Abigail
Landon
Babriel
Ethan

Zollinger, Anthony

Zollinger, Darien
Tracy
Kamron
Karson

Zollinger, Heber
Mae

Zollinger, John
Tonya
Kallie Rawlings
Zachary
Zan

Zollinger, Orson
Donna

Zollinger, Roland
Kathy
Austin
Brandi

Zollinger, Russell
Patricia

Zollinger, Todd

WORKS CITED

- Belliston, Loa Sater. "Recollections of Dr. C. I. Sater." Personal Journal.
- Bowen, Valerie K. and the Cassia County Historical Society. *Images of America: Cassia County*. Charleston, SC: Arcadia Publishing, 2009.
- Cottle, Ethel Hall. "Sketches of Malta and the Raft River Valley." CA: LDS Church Historical Dept., 1963.
- Elison, Elmo. Personal History.
- Estes, Virginia. Ed. *A Pause for Reflection*. Daughters of Utah Pioneers: Cassia County Company. Provo, Utah: J. Grant Stevenson, 1977.
- Gamble, Scott. "Trailblazer Tour." Malta, Idaho: Personal History, 1954.
- Hall, Estella. *South Idaho Press*. 5 April 1987.
- Hedberg, Kathleen. *Cassia County, Idaho: The Foundation Years*. Cassia County Commissioners. Caldwell, Idaho: The Caxton Printers, Ltd., 2005.
- Kossman, Fred. "Sketches of History of Raft River Valley." Personal History, 1950.
- Layton, Georgia. "Area Turkey ranching . . ." *Idaho Country*. November 1991:8.
- Maughan, Ralph. "Raft River Railroad Was Never Finished." *South Idaho Press*. 4 January 1981.
- Ottley, Kimberly. "Malta: A legacy of stewardship." *Century Farms*. 28 June 2005:12.
- Paskett, Naomi. "History of the Raft River Valley." *Malta Community: Book of Remembrance*. USA: Carr Printing Company for Tom Thumb Photo, July 1974.
- Savage, Arvetta. *South Idaho Press*. 8 July 1975.
- Smith, J. P. (Jack). Smith Family History.
- Stafford, William. "Silver Star." *Methow River Poems*. Lewiston, Idaho: Confluence Press, 1995.
- Steber, Rick and Kristi Steber. *Ruralite*. February 1991:16-17.
- Tracy, Fontella. "Della Williams recalls early days." *South Idaho Press*. 25 October 1977.
- Tracy, Fontella. "Raft River Valley Was a Crossroad." *South Idaho Press: 100 Years of Progress Edition*. August 1970.
- Tuttle, Heidi. *Times News*. 7 September 1988: A1.
- Udy, Mathias Cowley and Mary Lessey Udy. Personal History.
- Wallace, Lorraine. "People in Malta have been calling Clarence for years."
- Wight, Ann. "Pierce Family History."